

Department D

HORTICULTURE

2026 COMPETITION GUIDE

ENTRY DEADLINE: SEPTEMBER 1

DEPARTMENT SUPERINTENDENT

Dell Morgan

DROP OFF DAY

Wednesday, September 30: 8 a.m. to 6 p.m.

PICK UP DAY

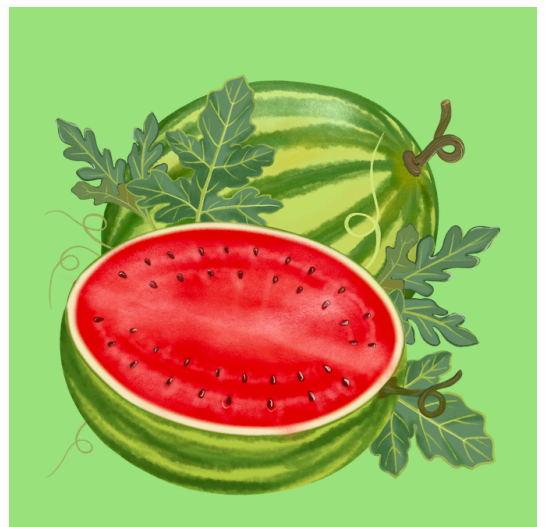
Monday, October 12: 10 a.m. to 6 p.m.

COMPETITIVE EXHIBITS OFFICE

Hours: Mon. - Fri., 8:30 a.m. - 4:30 p.m.

brannock@carolinaclassicfair.com

336-727-2236



**CLICK HERE TO ENTER
A COMPETITION!**

DROP-OFF AND PICK-UP

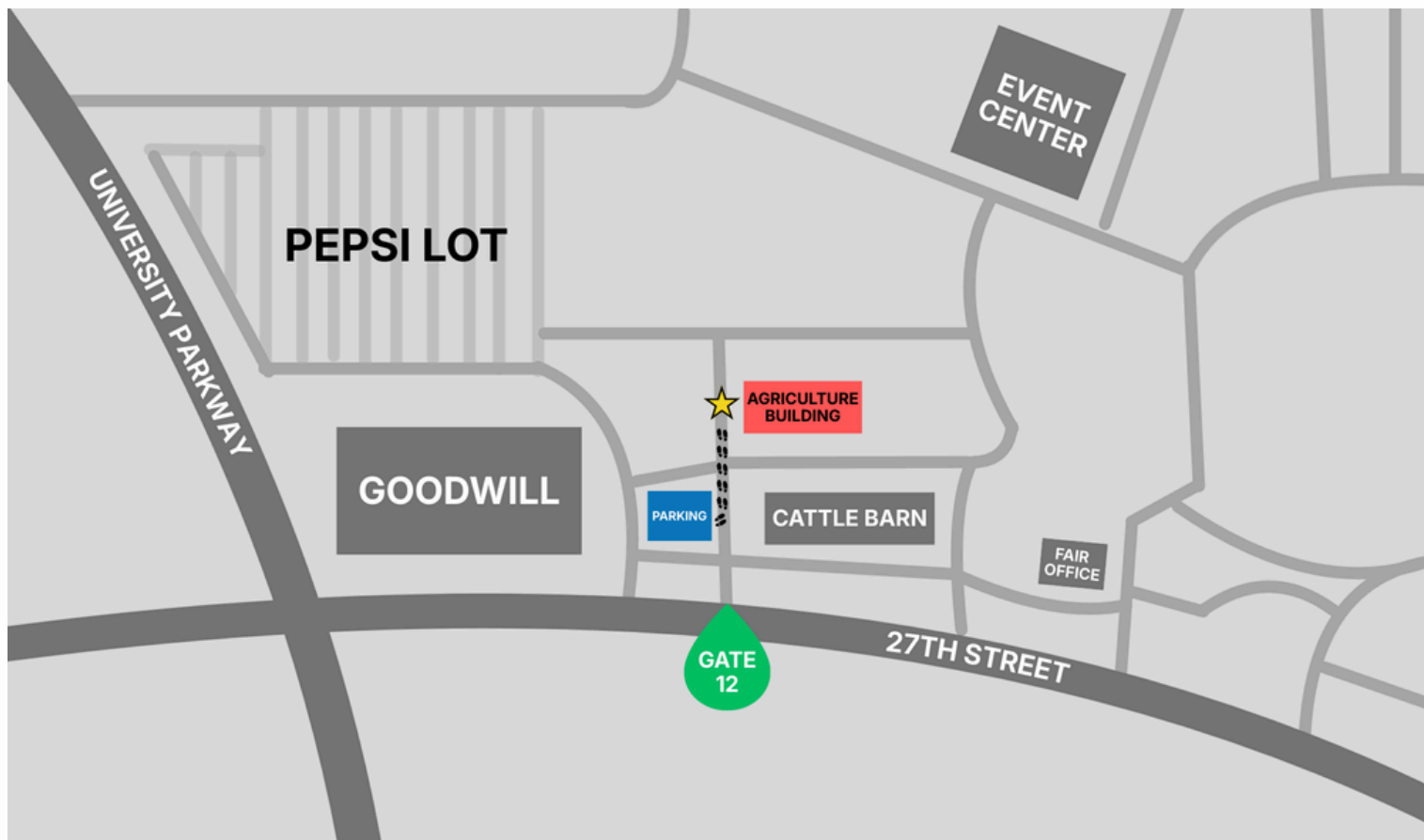
DROP-OFF INFORMATION

- Drop-off for **HORTICULTURE** exhibits is:
 - **Wednesday, September 30 from 8 a.m. to 6 p.m.**
- If you have entries for other departments, you may have a separate drop-off date. Please read each department's rules and guidelines when entering.
- Do **NOT** remove the claim check portion; you will need this to pick up your exhibit(s).

PICK-UP INFORMATION

- Pick-up for ALL exhibits is **(NO EXCEPTIONS)**:
 - **Monday, October 12 from 10 a.m. to 6 p.m.**
- You **MUST** have your claim check tag to reclaim your entry, NO EXCEPTIONS.
- Exhibits cannot be removed prior to October 12.
- **All items will be discarded after 6 p.m. October 12.**

ADDRESS: 2532 FARMERS MARKET WAY, GATE 12



FAQs & ENTRY INFORMATION

FREQUENTLY ASKED QUESTIONS

When will I receive my entry tag(s)? Entry tags will be mailed after September 1.

Where do I go to drop off my exhibit(s)? Exhibitors will enter Gate 12 off 27th street behind Goodwill. Please see the map on page 2.

Where will my exhibit(s) be displayed at the fair? Horticulture exhibits are displayed in the Agriculture Building.

What if my items start to deteriorate during the Fair? The Fair reserves the right to remove and discard exhibits that are deteriorating.

Do I need to furnish containers for my display? No, the Fair will furnish containers unless otherwise specified.

How do I pick up my exhibit(s) after the fair? All exhibits **MUST** be picked up by **Monday October 12 from 10 a.m. to 6 p.m.** No items will be removed before October 12. All items will be discarded after October 12. **NO EXCEPTIONS.**

NEW CLASSES

SECTION 109: YOUTH GARDENING

Any Variety Potatoes

Any Variety Onions

PREMIUMS AND AWARDS

- A ribbon is a badge of merit, and in no case should be attached to an article or animal where meritorious qualities are lacking.
- The following colors will be used to designate awards:
 - **Judge's Choice:** Red, White and Blue
 - **First Place:** Blue
 - **Second Place:** Red
 - **Third Place:** White
 - **Fourth Place:** Pink
 - **Fifth Place:** Yellow
- If awarded, all ribbons must be picked up following the Fair (October 12-13).
- Premiums will be paid only from the judging results records and **NOT** from the ribbon or tags on exhibits.
- Errors or omissions in premium payments not reported to the Fair Administrative Office by December 31, 2026, will **NOT** be paid.



CATEGORIES

SECTION 100

SMALL FRUITS

PREMIUMS: 1ST: \$10 | 2ND: \$9 | 3RD: \$8 | 4TH: \$7 | 5TH: \$6

FRUITS

- 001. Pears - Any Variety (*Plate of 5*)
- 002. Grapes - Muscadine or Scuppernong - White (*Plate of 25*)
- 003. Grapes - Muscadine or Scuppernong - Black (*Plate of 25*)
- 004. Persimmons - Wild Variety (*Plate of 10*)
- 005. Persimmons - Japanese Persimmons (*Plate of 5*)
- 006. Figs (*Plate of 5*)
- 007. Most Unusual Small Fruit (*Ex: lemon, pineapple, lime, kiwi, etc.*) (*2 specimens*)

NUTS AND SEEDS

- 008. Black Walnuts - New Crop in Shell (*25*)
- 009. Hickory Nuts - New Crop in Shell (*25*)
- 010. Pecans - New Crop in Shell (*25*)
- 011. Chestnuts - New Crop in Shell (*25*)
- 012. Other Nuts - New Crop in Shell (*NO ACORNS*) (*25*)
- 013. Sunflower Seeds - In Hull (*25*)



JUDGE'S CHOICE: \$10 & ROSETTE

(Selected from 1st place winners of categories above)



CATEGORIES

SECTION 101

APPLES

Exhibitors should bring five (5) apples on a plate for each class entered. Named bud sports and variety name must be on entry blank. Crabapples are NOT allowed.

PREMIUMS: 1ST: \$10 | 2ND: \$9 | 3RD: \$8 | 4TH: \$7 | 5TH: \$6

- 020. Red Delicious
- 021. Golden Delicious
- 022. Stayman
- 023. Cameo
- 024. Gold Rush
- 025. Rome Beauty
- 026. Gala
- 027. Granny Smith
- 028. Fuji
- 029. Jonagold
- 030. Arkansas Black
- 031. Pink Lady
- 032. Any Other Named Variety - Red
- 033. Any Other Named Variety - Yellow
- 034. Any Other Named Variety - Bicolor

PREMIUMS: 1ST: \$12 | 2ND: \$11 | 3RD: \$10 | 4TH: \$9 | 5TH: \$8

- 035. Largest Apple in Circumference
- 036. Most Unusual Apple



JUDGE'S CHOICE: \$10 & ROSETTE

(Selected from 1st place winners of categories above)

CATEGORIES

SECTION 102

VEGETABLES

Vegetables will be judged on quality, color, and uniformity of size. All vegetables must be grown by exhibitor. Variety must be named on entry blank.

PREMIUMS: 1ST: \$10 | 2ND: \$9 | 3RD: \$7 | 4TH: \$7 | 5TH: \$6

- 040. Beans - Snap (12 specimen)
- 041. Beans - Lima or Butter (12 specimen)
- 042. Beans - October/Cranberry (12 specimen)
- 043. Beets - Any Variety - No Tops (5 specimen)
- 044. Cucumbers - Any Variety (Plate of 5)
- 045. Eggplant - Any Variety (3)
- 046. Field Peas - Any Variety - Unshelled (12 specimen)
- 047. Onions - White or Yellow - Any Variety (Plate of 5)
- 048. Onions - Red - Any Variety (Plate of 5)
- 049. Peppers - Sweet - Green Bell (Plate of 3)
- 050. Peppers - Habanero (10 pods)
- 051. Peppers - Jalapeño (5 pods)
- 052. Peppers - Banana (Yellow or red, hot or sweet) (5 pods)
- 053. Peppers - Hot - Any Variety Not Listed (12 pods)
- 054. Potatoes - Irish Red (Plate of 5)
- 055. Potatoes - Irish White (Plate of 5)
- 056. Potatoes - Sweet - Any Variety (Plate of 5)



JUDGE'S CHOICE: \$10 & ROSETTE

(Selected from 1st place winners of categories above)

PREMIUMS: 1ST: \$17 | 2ND: \$14 | 3RD: \$12 | 4TH: \$11 | 5TH: \$10

- 057. Potatoes - Irish Red (1 peck)
- 058. Potatoes - Irish White (1 peck)
- 059. Potatoes - Sweet - Any Variety (1 peck)
- 060. Largest Sweet Potato by Weight



JUDGE'S CHOICE: \$10 & ROSETTE

(Selected from 1st place winners of categories above)

CATEGORIES

SECTION 102

VEGETABLES CONTINUED

PREMIUMS: 1ST: \$10 | 2ND: \$9 | 3RD: \$8 | 4TH: \$7 | 5TH: \$6

- 061. Tomatoes - Red - Any Variety - Any Size (5 specimen)
- 062. Tomatoes - Yellow - Any Variety - Any Size (5 specimen)
- 063. Tomatoes - Paste (5 specimen)
- 064. Largest Tomato by Weight - Any Variety
- 065. Squash - Summer - All Varieties - Choose Any One Variety to Exhibit (5 specimen)
- 066. Squash - Butternut (3 specimen)
- 067. Squash - Acorn (3 specimen)
- 068. Squash - Turban (1 specimen)
- 069. Squash - Any Other Variety Not Listed (1 specimen)
- 070. Okra - Table-size - One Plate (12 pods)
- 071. Most Unusual Vegetable in Shape, Size or Color (1 item)



JUDGE'S CHOICE: \$10 & ROSETTE

(Selected from 1st place winners of categories above)



CATEGORIES

SECTION 103

TURNIPS AND GOURDS

PREMIUMS: 1ST: \$12 | 2ND: \$10 | 3RD: \$8 | 4TH: \$7 | 5TH: \$6

TURNIPS

- 075. Largest Turnip with Tops by Weight (*Tops will be removed before weigh-in*)
- 076. Any Other Variety (*Single plate of 5*)

ORANAMENTAL GOURDS

- 077. Small Gourds - All One Variety (*3 specimen*)
- 078. Large Gourds - All One Variety (*3 specimen*)
- 079. Gourd with Longest Handle (*Long-handled gourds ONLY*)
- 080. Longest Gourd (*Ballbat, etc.*)
- 081. Gourd with Most Unusual Shape
- 082. Heaviest Gourd by Weight (*For gourds 100 pounds or more, place on pallet to unload*)



JUDGE'S CHOICE: \$10 & ROSETTE

(Selected from 1st place winners of categories above)

SECTION 104

LARGEST SUNFLOWER

Sunflowers MUST be in good condition with NO deterioration.

PREMIUMS: 1ST: \$14 | 2ND: \$12 | 3RD: \$10 | 4TH: \$9 | 5TH: \$8

- 085. Senior Largest Sunflower (*Ages 19 and over*)

PREMIUMS: 1ST: \$12 | 2ND: \$10 | 3RD: \$8 | 4TH: \$7 | 5TH: \$6

- 086. Youth Largest Sunflower (*Ages 6-18*)



JUDGE'S CHOICE: \$10 & ROSETTE

(Selected from 1st place winners of categories above)



CATEGORIES

SECTION 105

PUMPKINS

For pumpkins 100 pounds or more, place on pallet to unload. Exhibitor is responsible for helping to unload/load pumpkins.

PREMIUMS: 1ST: \$12 | 2ND: \$10 | 3RD: \$8 | 4TH: \$7 | 5TH: \$6

090. Cushaw - Any Variety (1 specimen)

091. Neck Pumpkins

PREMIUMS: 1ST: \$16 | 2ND: \$14 | 3RD: \$12 | 4TH: \$9 | 5TH: \$8

092. Best Matched Pair of Miniature Pumpkins (Ages 6-18)

093. Best Matched Pair of Miniature Pumpkins (Ages 19+)

PREMIUMS: 1ST: \$125 | 2ND: \$100 | 3RD: \$75 | 4TH: \$60 | 5TH: \$55

094. Largest Pumpkin by Circumference - Best Condition

PREMIUMS (PAID BY POUND): 1ST: \$2 | 2ND: \$1.50 | 3RD: \$1 | 4TH: \$0.75 | 5TH: \$0.50

095. Heaviest Pumpkin - Minimum 100 lbs. (Ages 19+)

PREMIUMS: 1ST: \$120 | 2ND: \$85 | 3RD: \$75 | 4TH: \$60 | 5TH: \$55

096. Heaviest Pumpkin (Ages 6-18)

PREMIUMS: 1ST: \$22 | 2ND: \$18 | 3RD: \$12 | 4TH: \$10 | 5TH: \$9

097. One Pumpkin - True to Type in Best Shape & Condition - Any Variety Under 50 lbs. (Ages 19+)

098. One Pumpkin - True to Type in Best Shape & Condition - Any Variety Under 50 lbs. (Ages 6-18)

099. One Pumpkin - True to Type (50-100 lbs.)

PREMIUMS: 1ST: \$26 | 2ND: \$22 | 3RD: \$15 | 4TH: \$10 | 5TH: \$9

100. Best Matched Pair of Pumpkins Under 50 lbs. (No miniatures)

101. Best Matched Pair of Pumpkins (50-100 lbs.)



JUDGE'S CHOICE: \$10 & ROSETTE

(Selected from 1st place winners of categories above)

CATEGORIES

SECTION 106

WATERMELONS

For watermelons 100 pounds or more, place on pallet to unload. Exhibitor is responsible for helping to unload/load watermelons.

PREMIUMS: 1ST: \$35 | 2ND: \$28 | 3RD: \$20 | 4TH: \$15 | 5TH: \$10

105. Watermelon in Best Shape & Condition - Any Variety (50-100 lbs.)

106. Watermelon in Best Shape & Condition - Any Variety (Under 50 lbs.)

PREMIUMS: 1ST: \$45 | 2ND: \$40 | 3RD: \$35 | 4TH: \$30 | 5TH: \$25

107. Largest Watermelon by Circumference - Best Condition

PREMIUMS (PAID BY POUND): 1ST: \$1 | 2ND: \$0.75 | 3RD: \$0.50 | 4TH: \$0.25 | 5TH: \$0.25

108. Heaviest Watermelon - Minimum 75 lbs. (Ages 19+)

PREMIUMS: 1ST: \$45 | 2ND: \$35 | 3RD: \$30 | 4TH: \$25 | 5TH: \$20

109. Heaviest Watermelon (Ages 6-18)



JUDGE'S CHOICE: \$10 & ROSETTE

(Selected from 1st place winners of categories above)



CATEGORIES

SECTION 107

ADULT DECORATIVE DISPLAYS

PREMIUMS: 1ST: \$25 | 2ND: \$20 | 3RD: \$15 | 4TH: \$10 | 5TH: \$8

Displays must not exceed 18" x 24." All gourds must be in good condition and be current year's crop except 0003 and 0004.

- 115. Vegetable Basket or Bowl
- 116. Most Functional Use of Gourds (*Ex: birdhouse, toy, lamp, bowl, etc.*)
- 117. Most Decorative Use of Gourds (*Not functional*)
- 118. Most Decorative Display of Current Season's Gourds
- 119. Decorative Pepper Basket - Any Variety
- 120. Decorative Cornucopia - **Patriotic** Theme



JUDGE'S CHOICE: \$10 & ROSETTE

(Selected from 1st place winners of categories above)

SECTION 108

YOUTH DECORATIVE DISPLAYS

PREMIUMS: 1ST: \$20 | 2ND: \$15 | 3RD: \$10 | 4TH: \$8 | 5TH: \$6

Displays must not exceed 18" x 24."

- 125. Vegetable Basket Display
- 126. Most Decorative Use of Gourds
- 127. Decorative Pepper Basket - Any Variety
- 128. Decorative Cornucopia - **Patriotic** Theme



JUDGE'S CHOICE: \$10 & ROSETTE

(Selected from 1st place winners of categories above)

CATEGORIES

SECTION 109

YOUTH GARDENING

PREMIUMS: 1ST: \$8 | 2ND: \$7 | 3RD: \$6 | 4TH: \$5 | 5TH: \$4

PRE-SCHOOL THRU 2ND GRADE

- 130. Cucumbers (*Plate of 3*)
- 131. Pepper - Any Variety (*Plate of 5*)
- 132. Tomato - Any Variety (*Plate of 3*)
- 133. Squash - Any Variety (*Plate of 3*)
- 134. Okra (*Plate of 6*)
- 135. Potatoes - Any Variety (*Plate of 3*) **NEW**
- 136. Onions - Any Variety (*Plate of 3*) **NEW**

GRADES 3-5

- 137. Cucumbers (*Plate of 3*)
- 138. Pepper - Any Variety (*Plate of 5*)
- 139. Tomato - Any Variety (*Plate of 3*)
- 140. Squash - Any Variety (*Plate of 3*)
- 141. Okra (*Plate of 6*)
- 142. Potatoes - Any Variety (*Plate of 3*) **NEW**
- 143. Onions - Any Variety (*Plate of 3*) **NEW**

GRADES 6-8

- 144. Cucumbers (*Plate of 3*)
- 145. Pepper - Any Variety (*Plate of 5*)
- 146. Tomato - Any Variety (*Plate of 3*)
- 147. Squash - Any Variety (*Plate of 3*)
- 148. Okra (*Plate of 6*)
- 149. Potatoes - Any Variety (*Plate of 3*) **NEW**
- 150. Onions - Any Variety (*Plate of 3*) **NEW**

GRADES 9-12

- 151. Cucumbers (*Plate of 3*)
- 152. Pepper - Any Variety (*Plate of 5*)
- 153. Tomato - Any Variety (*Plate of 3*)
- 154. Squash - Any Variety (*Plate of 3*)
- 155. Okra (*Plate of 6*)
- 156. Potatoes - Any Variety (*Plate of 3*) **NEW**
- 157. Onions - Any Variety (*Plate of 3*) **NEW**



JUDGE'S CHOICE: \$10 & ROSETTE

(Selected from 1st place winners of categories above)