

*Department B*

# BEES & HONEY

## 2026 COMPETITION GUIDE

---

**ENTRY DEADLINE: SEPTEMBER 1**

### DEPARTMENT SUPERINTENDENT

Jeff Thompson

### DROP OFF DAY

Wednesday, September 30: 8 a.m. - 6 p.m.

### PICK UP DAYS

Monday, October 12: 10 a.m. - 6 p.m.

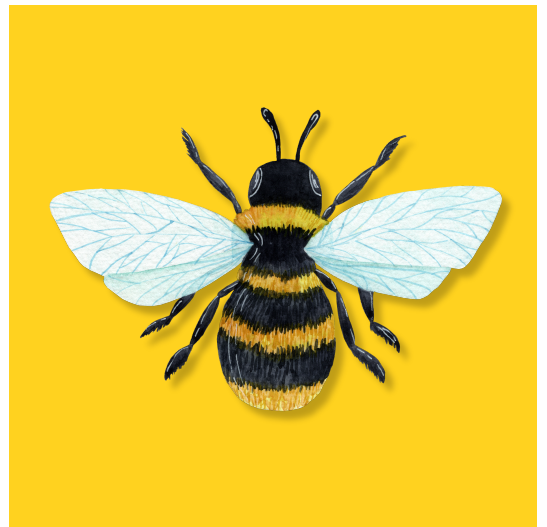
### COMPETITIVE EXHIBITS OFFICE

Hours: Mon. - Fri., 8:30 a.m. - 4:30 p.m.

[brannock@carolinaclassicfair.com](mailto:brannock@carolinaclassicfair.com)

336-727-2236

---



**CLICK HERE TO ENTER  
A COMPETITION!**

# DROP-OFF AND PICK-UP

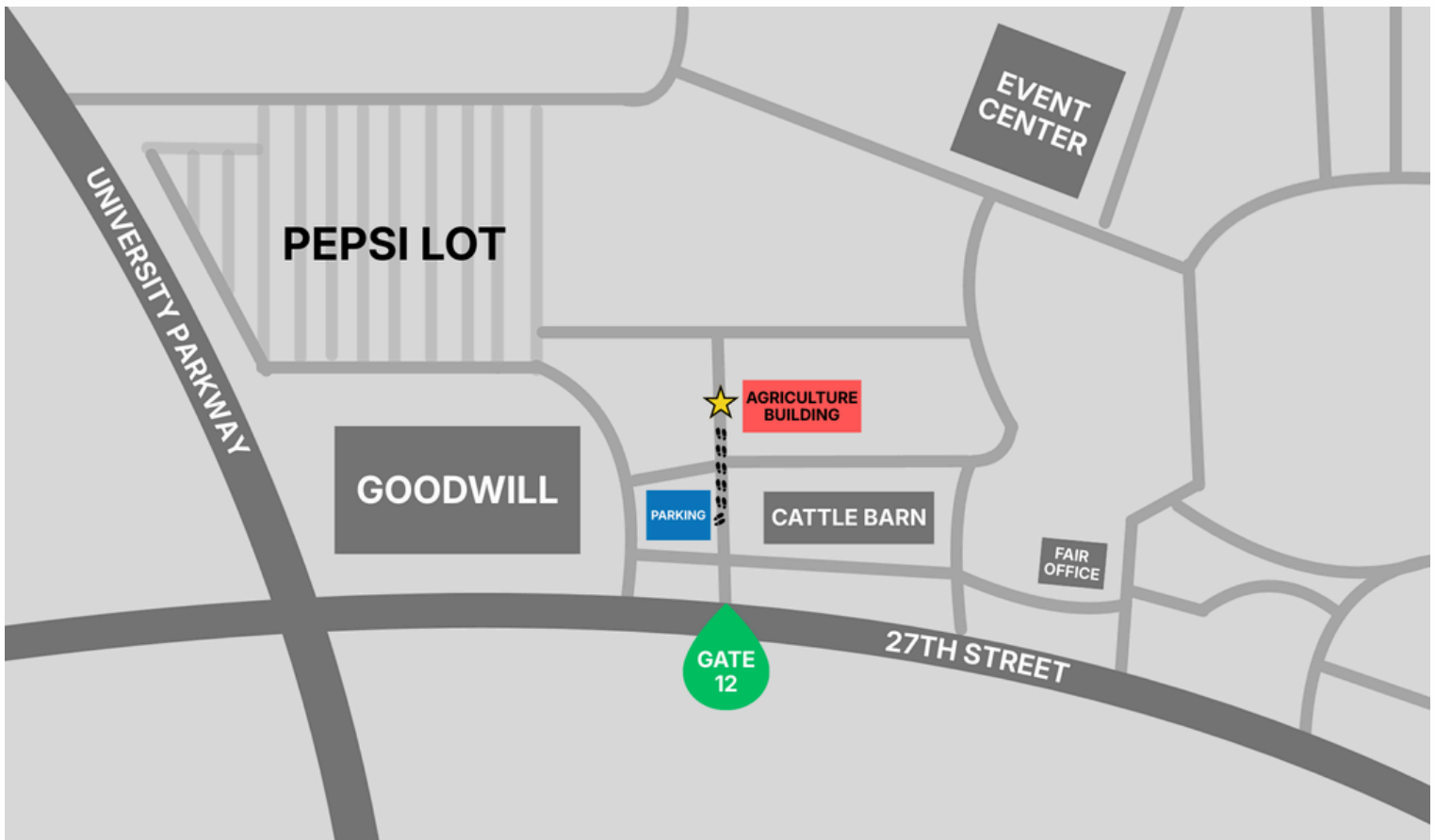
## DROP-OFF INFORMATION

- Drop-off for **BEES AND HONEY** exhibits is:
  - **Wednesday, September 30 from 8 a.m. to 6 p.m.**
- If you have entries for other departments, you may have a separate drop-off date. Please read each department's rules and guidelines when entering.
- Do **NOT** remove the claim check portion; you will need this to pick up your exhibit(s).

## PICK-UP INFORMATION

- Pick-up for ALL exhibits is **(NO EXCEPTIONS)**:
  - **Monday, October 12 from 10 a.m. to 6 p.m.**
- You **MUST** have your claim check tag to reclaim your entry, NO EXCEPTIONS.
- Exhibits cannot be removed prior to October 12.
- **All items will be discarded after 6 p.m. on October 12.**

**ADDRESS: 2532 FARMERS MARKET WAY, GATE 12**



# FAQs & ENTRY INFORMATION

## FREQUENTLY ASKED QUESTIONS

**When will I receive my entry tag(s)?** Entry tags will be mailed after September 1.

**Where do I go to drop off my exhibit(s)?** Exhibitors will enter Gate 12 off of 27<sup>th</sup> street behind Goodwill. Please see the map on page 2.

**Where will my exhibit(s) be displayed at the fair?** Bees and Honey exhibits are displayed in the Agriculture Building.

**Will I need to furnish the containers for my display?** All honey exhibits must be submitted in two glass queen body jars filled to the rim just below the cap with clean lids.

**Can honey be entered from a previous year?** No. Honey must be made after the close of the previous year's fair.

**How do I pick up my exhibit(s) after the fair?** All entries **MUST** be picked up on **Monday, October 12 from 10 a.m. to 6 p.m.** No items will be removed before October 12. All items will be discarded after October 12. **NO EXCEPTIONS!**

## NEW CLASSES

### SECTION 101

Sweet Mead in 1 LB. Jars (2 Only)

Dry Mead in 1 LB. Jars (2 Only)

# PREMIUMS AND AWARDS

- A ribbon is a badge of merit, and in no case should be attached to an article or animal where meritorious qualities are lacking.
- The following colors will be used to designate awards:
  - **Judge's Choice:** Red, White and Blue
  - **First Place:** Blue
  - **Second Place:** Red
  - **Third Place:** White
  - **Fourth Place:** Pink
  - **Fifth Place:** Yellow
- If awarded, all ribbons must be picked up following the Fair (October 12-13).
- Premiums will be paid only from the judging results records and **NOT** from the ribbons or tags on exhibits.
- Errors or omissions in premium payments not reported to the Fair Administrative Office by December 31, 2026, will **NOT** be paid.



# JUDGING CRITERIA

The following factors are general guides for the use of judges and exhibitors. The assignment of points for each factor in judging will be at the discretion of the judges. The moisture content of honey entries will be checked by the superintendent upon receipt at the Fair, if requested.

## DISPLAY FACTORS

1. Educational and advertising value	40 POINTS
2. Showmanship: includes decoration, overall attractiveness and originality	30 POINTS
3. Quality: includes overall display and component parts	30 POINTS
	<hr/> 100 POINTS

## BEESWAX AND MODELS FACTORS

1. Cleanliness: absence of honey, propolis and other impurities	30 POINTS
2. Quality and appearance of beeswax products	30 POINTS
3. Color: straw to canary yellow	20 POINTS
4. Uniformity of appearance of all wax in entry	15 POINTS
5. Aroma and texture	5 POINTS
	<hr/> 100 POINTS

## BROOD COMBS FACTORS

1. Quality: straightness of combs, freedom from irregular and excess drone cells, absence of pollen or propolis filled cells, comb built to bottom and corners of frames, assembly and cleanliness of wooden frames	70 POINTS
2. Uniformity: uniformity of wooden frames and cells	30 POINTS
	<hr/> 100 POINTS

## CREAMED HONEY FACTORS

1. Fineness of crystals	30 POINTS
2. Cleanliness and freedom from foam	30 POINTS
3. Uniformity and firmness of product	25 POINTS
4. Flavor and color	15 POINTS
	<hr/> 100 POINTS

## HONEY MEAD OR WINE FACTORS

1. Clarity	25 POINTS
2. Taste	20 POINTS
3. Bouquet	20 POINTS
4. Body	10 POINTS
5. Bottles	10 POINTS
6. Bottles Closure	10 POINTS
7. Color	5 POINTS
	<hr/> 100 POINTS

# JUDGING CRITERIA

## **BEESWAX FACTORS**

1. Cleanliness: absence of honey and other impurities	30 POINTS
2. Color: straw to canary yellow	25 POINTS
3. Uniformity of appearance	20 POINTS
4. Absence of cracking and shrinkage	15 POINTS
5. Aroma and texture	10 POINTS
	<hr/>
	100 POINTS

## **EXTRACTED HONEY FACTORS**

1. Cleanliness: absence of lint, dirt, wax and foam	30 POINTS
2. Flavor: absence of overheating and fermentation	15 POINTS
3. Color and brightness	15 POINTS
4. Container appearance: cleanliness and uniformity	15 POINTS
5. Density (moisture content over 18.6% - Disqualified)	10 POINTS
6. Absence of granulation or crystallization	10 POINTS
7. Uniformity of entries in class	5 POINTS
	<hr/>
	100 POINTS

## **DISPLAY OF NECTAR-PRODUCING PLANTS FACTORS**

1. Educational Value: Information and effectiveness in transmitting information	40 POINTS
2. Quality: Overall attractiveness	30 POINTS
3. Showmanship: Originality, choice of colors and arrangement	30 POINTS
	<hr/>
	100 POINTS

## **CHUNK HONEY FACTORS**

1. Cleanliness of liquid portion: absence of foam, dirt, wax and crystallization	20 POINTS
2. Neatness of comb cut; ragged edges, parallel cuts and uniformity of size cut	20 POINTS
3. Uniformity of appearance: includes containers, cut comb, liquid honey and total contents of jars	20 POINTS
4. Absence of watery cappings, uncapped cells and pollen cells	15 POINTS
5. Cleanliness: lack of travel stain and foreign matter in comb	15 POINTS
6. Density of liquid portion (moisture over 18.6% - Disqualified)	10 POINTS
	<hr/>
	100 POINTS

## **GIFT PACKAGE OF BEE PRODUCTS FACTORS**

1. General appearance	30 POINTS
2. Originality	30 POINTS
3. Quality of components	20 POINTS
4. Availability of components	10 POINTS
5. Manageability (ability to transport)	10 POINTS
	<hr/>
	100 POINTS

# CATEGORIES

## JUDGING CRITERIA

- Educational and advertising value
- Showmanship: includes decoration, overall attractiveness and originality
- Quality: includes overall display and component parts

## SECTION 100

## SENIOR DIVISION

**PREMIUMS: 1ST: \$100 | 2ND: \$90 | 3RD: \$80 | 4TH: \$70 | 5TH: \$60**

**001.** 24-48 LBS. Display of Honey (*Can be in glasses, frames, or both*)

**PREMIUMS: 1ST: \$15 | 2ND: \$12 | 3RD: \$10 | 4TH: \$8 | 5TH: \$6**

**002.** Bright Chunk Honey in 1 LB. Jars (*2 Only*)

**003.** Bright Extracted Honey in 1 LB. Jars (*2 Only*)

**004.** Amber Chunk Honey in 1 LB. Jars (*2 Only*)

**005.** Amber Extracted Honey in 1 LB. Jars (*2 Only*)

**006.** Dark Chunk Honey in 1 LB. Jars (*2 Only*)

**007.** Dark Extracted Honey in 1 LB. Jars (*2 Only*)

**008.** Creamed Honey in 1 LB. Jars (*2 Only*)

**009.** Sweet Mead in 1 LB. Jars (*2 Only*) **NEW**

**010.** Dry Mead in 1 LB. Jars (*2 Only*) **NEW**

**PREMIUMS: 1ST: \$20 | 2ND: \$18 | 3RD: \$15 | 4TH: \$10 | 5TH: \$8**

**011.** Light Cut Comb Squares (2) in Container (*Not less than 12 oz.*)

**012.** Dark Cut Comb Squares (2) in Container (*Not less than 12 oz.*)

**013.** Best Display of Beeswax Products (*Models, candles, novelties; not less than 15 lbs.*)

**014.** Beeswax Block (*Not less than 5 lbs.*)

**015.** Cut Comb

**016.** Extract Comb

**017.** Display of Nectar-Producing Plants, Showing Bloom (*May include living plants, dried, photos, or other aids suitably mounted or displayed*)

**PREMIUMS: 1ST: \$20 | 2ND: \$18 | 3RD: \$15 | 4TH: \$10**

**018.** Gift Package of Bee Products (*Suitable for sale to public*)



**JUDGE'S CHOICE: SENIOR SWEEPSTAKES: \$25 & ROSETTE**

*(Selected from 1st place winners of categories above)*

# CATEGORIES

## JUDGING CRITERIA

The theme of the display must be related to BEEKEEPING or any phase of BEEKEEPING (i.e. pollination, honey production, beeswax usage, etc.). The Junior Division entries ARE NOT to be an abbreviated version of the Senior Division. In addition to the judging criteria on pages 6-7, the following guidelines must be observed for Section 102:

1. Any beekeeping items or products may be used to reinforce the theme of the display; however, the major content of the display must be unmistakably the result of the junior exhibitor's efforts.
2. Adult advice and assistance are encouraged; however, this is a junior display and will be judged on the exhibitor's individual effort. Any display that does not obviously reflect work of the exhibitor will be disqualified.

## GUIDELINES FOR JUDGING YOUTH DISPLAYS

1. Clarity of Display Theme (Communication of theme to the observer, clearly and quickly)	30 POINTS
2. Educational and Advertising Value	25 POINTS
3. Originality and Attractiveness	25 POINTS
4. Quality and Uniformity (Poster art, lettering and products used)	20 POINTS
	<hr/>
	100 POINTS

## SECTION 101

## YOUTH DIVISION (AGES 6-16)

**PREMIUMS: 1ST: \$85 | 2ND: \$75 | 3RD: \$65 | 4TH: \$55**

- 020.** Educational Beekeeping Display (*Theme: Tools of a Beekeeper; Ages 6-10*)  
**021.** Educational Beekeeping Display (*Theme: Bees A Year in Beekeeping; Ages 11-16*)



**JUDGE'S CHOICE** (*Selected from 1st place winners of categories above*)

**YOUTH SWEEPSTAKES (AGES 6-10): \$15 & ROSETTE**

**YOUTH SWEEPSTAKES (AGES 11-16): \$15 & ROSETTE**

