

Department I

FLORICULTURE

2026 COMPETITION GUIDE

ENTRY DEADLINE: SEPTEMBER 1

DEPARTMENT SUPERINTENDENT

Jimmy Speas: 336-416-5838

ASSISTANT DESIGN SUPERINTENDENT

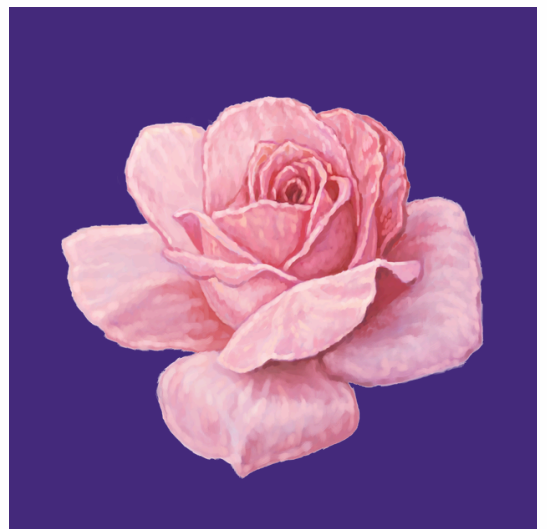
Kimberly Cruz: 336-575-1869

COMPETITIVE EXHIBITS OFFICE

Hours: Mon. - Fri., 8:30 a.m. - 4:30 p.m.

brannock@carolinaclassicfair.com

336-727-2236



**CLICK HERE TO ENTER
A COMPETITION!**

FLOWER SHOW DIRECTORY

COORDINATORS

ANNUALS, BULBS, CORMS & TUBERS

Deb McClain

CLERKS CHAIRMAN

Kris Ryan: 336-287-0047

COLLECTIONS

Amy Dixon

CONTAINER PLANTS

Adrienne Roethling

DAHLIAS

Jon & Becky Anderson

DESIGN CLASSIFICATION

Will Stanard

DESIGN SCHEDULE & ENTRIES

Kimberly Cruz: 336-575-1869

Natalie Tutuska

HORTICULTURE ENTRIES

Carolina Classic Fair

HORTICULTURE ENTRIES

CLASSIFICATION & SCHEDULE

Beth Leonard: 336-425-4777

JUDGES CHAIRMAN

Cathy Owen: 336-407-1577

PERENNIALS, VINES &

WOODY SHRUBS

Sarah Draper

PLACEMENT CHAIRMAN

Barbara Cullen: 336-768-6466

ROSES

Ray Owen

SET UP & TEAR DOWN

Jimmy Speas: 336-416-5838

YOUTH CHAIRMAN & GRAPHICS

Sara Rodgman

YOUTH CUT SPECIMEN

Sara Rodgman

AWARDING POINTS

Only one (1) ribbon may be awarded per class.

First Place: Blue Ribbon

- Must score 90 or more points
- Premium Money: \$4.00

Second Place: Red Ribbon

- Must score 85 or more points
- Premium Money: \$3.00

Third Place: White Ribbon

- Must score 80 or more points
- Premium Money: \$2.00

Fourth Place: Pink Ribbon

- Must score 75 or more points
- Premium Money: \$1.00



SHOW RULES

- Pre-registration is required in all classes for container grown plants, design, all cut horticulture, and all collections.
- **NEW!** Entries for Container Grown Plants will be accepted on Thursday October 1, from 3 to 6 p.m. Judging will take place at 6:30 p.m. No containers over 12" in diameter will be accepted. Containers are measured from rim to rim at the top.
- **NEW!** Entries for Designs will be accepted on Thursday, October 1, from 3 to 6 p.m. and Tuesday, October 6, from 3 to 6 p.m. Judging will take place each day at 6:30 p.m.
- **NEW!** Entries for all cut horticulture and collections will be accepted on Friday, October 2, from 7 a.m. to 10 a.m. (I) and Wednesday, October 7 (J) from 7 a.m. to 10 a.m. Judging will begin at 10:30 a.m. both days. Only one entry per exhibitor in each Collection class.
- Judging will be conducted by experienced horticulture growers, North Carolina Master Gardeners Volunteers (NCEMGV), Garden Club Council Judges, ADS (American Dahlia Society) accredited judges, and ARS (American Rose Society) accredited judges.
- All entries will be acknowledged by mailed letter from the Fair Office and will include entry tags for each exhibit entered. Be sure to bring these entry tags with your entries. They are proof that you have pre-registered as required and therefore save time in accepting your entries.
- **NEW!** If you fail to receive your entry tags in the mail, or there is a discrepancy with your entry tags, you must advise the Fair Office at 336-727-2236 least 5 days prior to the first flower show.
- **NEW!** More than one exhibitor may exhibit from one garden in any one class.
- Exhibits may NOT be removed before the show closes on Tuesday, October 6, and Monday, October 12. Prize money will be forfeited by anyone who does not abide by this rule.
- Container plants are to be removed on Monday, October 12 from 9 a.m. to 11 a.m.
- Fair management will not be responsible for damage or loss of property, though reasonable care will be taken to protect all materials exhibited.
- Prize money will be paid only for awards as they appear in the books and NOT from ribbons.
- Ribbons must be picked up after the fair between 9 -11 a.m. October 12th. NO RIBBONS WILL BE MAILED.

CUT SPECIMENS

Freshness (No wilting nor old petals, leaves)	50
Insect/Disease-free	20
Grooming (Clean foliage)	20
Presentation (Specimen posed properly)	10

Total: 100

CONTAINER GROWN PLANTS

Grooming (Clean, undamaged foliage)	80
Cleanliness of Container and Proportion of Container Plant	20

Total: 100

EXHIBITOR REFERENCE GUIDE

- All horticulture entries **MUST** have been grown by the exhibitor.
- Container grown plants must have been in the exhibitor's possession for at least 90 days.
- Container grown plants should be well groomed with no seedpods, no wilted flowers, no damage or unclean foliage, no broken stems, and no "training" props visible. The container should be clean and in scale with the size of the plant. No accessory foliage can be used.
- Clear glass vases will be provided for all cut specimens. **If you use your own vase, we CANNOT assure you it will be returned.**
- The size of the vase should be in proportion to the specimen you are exhibiting. Wedging is allowed in the neck of the vase to steady the specimen and improve its pose. Clear wrap, such as Saran wrap, is preferred.
- Any wilted or unsightly entry may be removed at any time during the show.
- Cut specimens must be outdoor grown.
- If a plant is considered a flowering plant, it should be exhibited as a flowering plant. Foliage plants may flower but should be exhibited as foliage plants if grown for their leaves.
- Specimens with a class designation may not be entered in the "Any Other" class.
- Cut specimens early in the morning or late evening. Use sharp pruners to make a clean cut. Immediately place the specimen in warm tap water and place it in a cool, dark place free of draft. This is referenced as "conditioning" your specimens. It improves substance and holds freshness. Re-cut the stem prior to putting it in the vase to exhibit to maintain longer freshness. Some plants, such as basil, should be cut from woody stems at least 1 day prior to exhibiting. Basil may wilt once it is cut but usually freshens back up within a few hours.
- A **SPECIMEN** is one stem or stalk with attached foliage and blooms. A **SPRAY** is a group of florets on a single branched stalk. Do not exhibit a spray with only 1 bloom and buds or just buds. It must have at least 2 blooms at the exhibition stage. A **STALK** is a stem or axis of a plant that may include branches. A **STEM** is a support plant structure to which buds, leaves and flowers are attached. A **STEM** and a **STALK** are similar in definition.
- Grooming of horticulture specimens is permitted. Remove damaged leaves. No wire, oil, spray, or artificial color is permitted in horticulture entries. Evidence of gardening sprays, residue, dust, or insect damage should be removed from the specimen.
- Foliage is not permitted below water level in vase (except: Gladiolus).
- **NEW!** Stems should be at least 3" below water level upon entry.
- No entries longer than 30" from top to bottom of specimen will be accepted unless otherwise noted.

AWARDS

FRIDAY AND WEDNESDAY AWARDS

Container Grown Plants: \$25

- Classes 001-030.
- Red, White, and Blue Rosette

Youth Container Grown Plants: \$25

- Classes 031-033.
- Red, White, and Blue Rosette

Bulbs, Corms, and Tubers: \$25

- Classes 035-041.
- Red, White, and Blue Rosette

Collections: \$25

- Classes 045-047, 130-131, 191-192.
- Red, White, and Blue Rosette

Annuals: \$25

- Classes 050-070.
- Red, White, and Blue Rosette

Perennials: \$25

- Classes 095-107.
- Red, White, and Blue Rosette

Woody Plants: \$25

- Classes 110-120.
- Red, White, and Blue Rosette

Native Perennials, Ornamental Grasses, Vines: \$25

- Classes 095-107.
- Red, White, and Blue Rosette

Large Roses: \$25

- Classes 125-126
- Red, White, and Blue Rosette

Small Roses: \$25

- Classes 127-128.
- Red, White, and Blue Rosette

Decorative or Cactus Dahlias: \$25

- Classes 133-166.
- Red, White, and Blue Rosette

Miscellaneous Dahlias: \$25

- Classes 167-190.
- Red, White, and Blue Rosette

Youth Horticulture: \$25

- Classes 195-206.
- Red, White, and Blue Rosette

Overall Best Cut Specimen: \$50

- All Cut Specimens.
- Red, White, and Blue Rosette

Best Overall Container Plant: \$50

- All Container Plants.
- Red, White, and Blue Rosette

Neil Bolton Award: \$100

- All Classes.
- Red, White, and Blue Banner

HORTICULTURE INFORMATION

DIVISION I HORTICULTURE SPECIALTY SHOW

FRIDAY, OCTOBER 2

- Horticulture I- "America the Beautiful"
- Education

WEDNESDAY, OCTOBER 7

- Horticulture J: "My Country Tis Of Thee"
- Education

HORTICULTURE STAGING

ALL ENTRIES REQUIRE PRE-REGISTRATION. ENTRIES ARE DUE SEPTEMBER 1.

FRIDAY SHOW

- Friday entries must be brought to the Event Center between 7 and 10 a.m. on Friday, October 2.

WEDNESDAY SHOW

- Wednesday entries must be brought to the Event Center between 7 and 10 a.m. on Wednesday, October 7.

CONTAINER-GROWN PLANTS

- Container-grown plants 12" or less container will be accepted Thursday, October 1 between 3 and 6 p.m.

HORTICULTURE

I-Friday Show

SECTION 102

CONTAINER GROWN PLANTS

PREMIUMS: 1ST: \$10 | 2ND: \$8 | 3RD: \$6 | 4TH: \$4

- I-001 Asparagus, any variety (includes sprengeri, Meyers & Plumosa)
- I-002 Begonia, semperflorens, (Wax Begonia), any color, blooming
- I-003 Begonia, Dragon Wing, any color
- I-004 Begonia, Rex or Angelwing, or any other grown for foliage, flower not necessary
- I-005 Begonia, any other not listed, blooming
- I-006 Bromeliads spp.
- I-007 Cactus, any type, specimen plant, under 6" container
- I-008 Cactus, any type, specimen plant, over 6" container
- I-009 Crassula spp. (Jade Plant), specimen plant
- I-010 Dracaena, specimen plant
- I-011 Succulent, any type, under 6" container
- I-012 Succulent, any type, 6" to 12" container
- I-013 Succulent Garden, 3 or more different varieties in one container
- I-014 Fern, any large frond type (i.e. Boston, Sword, Macho, Dallas, etc.)
- I-015 Fern, any small frond type (i.e. Rabbits foot, Maidenhair, Button, etc.)
- I-016 Fern, Staghorn
- I-017 Impatiens - New Guinea hybrid, any color
- I-018 Impatiens wallerana x hybrida, any color
- I-019 Monstera
- I-020 Nephthytis, spp. (Syngonium or spp any variety)
- I-021 Orchids, any type, flowering
- I-022 Capsicum frutescens (Ornamental peppers)
- I-023 Pelargonium (Geranium) any color, specimen plant, blooming
- I-024 Philodendron, large leaf, or small leaf
- I-025 Plectranthus, any variety (i.e. Swedish ivy, Cuban oregano)
- I-026 Rhoeco spathacea (Moses-in-the-Bulrushes)
- I-027 Saintpaulia (African Violets) (single or double blooming)
- I-028 Sansevieria (Snake plant), any variety
- I-029 Foliage plants not listed above
- I-030 Flowering plants not listed above blooming

Youth Container Grown Plants

- I-031 Elementary School: any container grown plant in a container up to 6" in diameter
- I-032 Middle School: any container grown plant in a container 6" to 10" in diameter
- I-033 High School: any container grown plant in a container 8" to 12" in diameter

HORTICULTURE

I-Friday Show J-Wednesday Show

SECTION 103

BULBS, CORMS, AND TUBERS

PREMIUMS: 1ST: \$4 | 2ND: \$3 | 3RD: \$2 | 4TH: \$1

I-035	J-035	Japanese Anemone, any color, specimen stalk or spray
I-036	J-036	Arum Italicum (<i>3 leaves</i>)
I-037	J-037	Caladium (<i>3 leaves</i>)
I-038	J-038	Hosta, any variety (<i>3 leaves no bloom</i>)
I-039	J-039	Lycoris Radiata, specimen bloom
I-040	J-040	Any Other bulb, corm, tuber, flowering, specimen bloom
I-041	J-041	Any Other bulb, corm, tuber, non-flowering (<i>1 stalk</i>)

SECTION 104

COLLECTIONS

PREMIUMS: 1ST: \$20 | 2ND: \$15 | 3RD: \$10 | 4TH: \$5

One Entry per Exhibitor

I-045	J-045	Collection of Annuals or Tender Perennials (<i>5 different</i>)
I-046	J-046	Collection of Herbs (<i>5 different</i>)
I-047	J-047	Collection of Sun Coleus, Solonostemon (<i>5 different</i>)

HORTICULTURE

I-Friday Show J-Wednesday Show

SECTION 105

ANNUALS

PREMIUMS: 1ST: \$4 | 2ND: \$3 | 3RD: \$2 | 4TH: \$1

I-050	J-050	Begonia - Any Type (<i>Specimen or stalk</i>)
I-051	J-051	Celosia argentea cristata - Crested - any color
I-052	J-052	Celosia argentea plumosa - Plumed or Feather - any color
I-053	J-053	Coleus (<i>Specimen stalk</i>)
I-054	J-054	Cosmos, 3 stems, any color
I-055	J-055	Herb (annual), Ocimum basilicum (basil)
I-056	J-056	Herb - Any Other Annual Herb (<i>Ex: dill, calendula</i>)
I-057	J-057	Impatiens, New Guinea hybrids
I-058	J-058	Impatiens walleriana x hybrida - any color
I-059	J-059	Marigolds (Tagetes x hybrida) - 2" or larger blooms, 3 stems, any color
I-060	J-060	Marigolds (Tagetes x hybrida) - under 2" blooms, 3 stems, any color
I-061	J-061	Salvia coccineus - Any Color (<i>1 stalk</i>)
I-062	J-062	Salvia splendens - Any Color (<i>1 stalk</i>)
I-063	J-063	Salvia - Any Other Annual (<i>1 stalk</i>)
I-064	J-064	Zinnia x hybrida - Any Solid Color (<i>Over 3", 3 stems</i>)
I-065	J-065	Zinnia x hybrida - Bi-color or Variegated (<i>3 stems</i>)
I-066	J-066	Zinnia x hybrida - Dwarf (<i>2-3" in diameter 3 stems, any color</i>)
I-067	J-067	Zinnia x hybrida - Miniature (<i>Under 2" in diameter, 3 stems, any color</i>)
I-068	J-068	Annual grown for decorative foliage (i.e., Jacob's Coat, Polka Dot, etc.) (<i>1 stalk</i>)
I-069	J-069	Annuals everlasting, grown for drying (i.e., Statice, Strawflower, Globe Amaranth, etc.) (<i>1 stalk</i>)
I-070	J-070	Annual Not Listed Above (<i>Specimen bloom or spray</i>)

HORTICULTURE

I-Friday Show J-Wednesday Show

SECTION 106

PERENNIALS

PREMIUMS: 1ST: \$4 | 2ND: \$3 | 3RD: \$2 | 4TH: \$1

I-075	J-075	Salvia guaranitica
I-076	J-076	Salvia elegans (pineapple sage)
I-077	J-077	Salvia, any other perennial or tender perennial salvia, i.e. Vanhouttei, Discolor, Farinacea, Leucantha
I-078	J-078	Chrysanthemum, daisy type, any color or size, specimen spray or stalk
I-079	J-079	Chrysanthemum, full decorative type, any color or size, specimen or stalk
I-080	J-080	Chrysanthemum, superbum, Shasta daisy, specimen spray or stalk
I-081	J-081	Aster and Cultivars, any color, spray (<i>Must not exceed 24"</i>)
I-082	J-082	Gerbera Daisies, specimen bloom
I-083	J-083	Herb, Lavandula angustifolia (lavender) (<i>1 stalk</i>)
I-084	J-084	Herb, Mentha (mint) (<i>1 stalk</i>)
I-085	J-085	Herb, Origanum (oregano) (<i>1 stalk</i>)
I-086	J-086	Herb, Salvia officinalis (sage) (<i>1 stalk</i>)
I-087	J-087	Herb, Thymus (thyme) (<i>1 stalk</i>)
I-088	J-088	Herb, Salvia rosmarinus (rosemary) (<i>1 stalk</i>)
I-089	J-089	Rudbeckia (black eye susan) (<i>1 bloom</i>)
I-090	J-090	Sedum (hylotelephium any spp.) (<i>1 stalk</i>)
I-091	J-091	Any Perennial, grown for foliage, stalk or spray
I-092	J-092	Any Perennial not listed above, specimen bloom, stalk or spray

Native Perennials

I-095	J-095	Hardy Ageratum (conoclinium coelestium) specimen spray or stalk
I-096	J-096	Goldenrod (solidago spp.) garden grown (<i>1 stalk</i>)
I-097	J-097	Helianthus, any species, specimen stalk (<i>Must not exceed 36"</i>)
I-098	J-098	Any other Native Perennial not otherwise listed, garden grown, single specimen

Ornamental Grasses

I-100	J-100	Any Ornamental Grass, 1 plume, head or frond
-------	-------	--

HORTICULTURE

I-Friday Show J-Wednesday Show

SECTION 107

VINES

PREMIUMS: 1ST: \$4 | 2ND: \$3 | 3RD: \$2 | 4TH: \$1

I-105	J-105	Annual or Tropical Vine, blooming or berried, single stalk
I-106	J-106	Hardy Perennial Vine, bloomed or berried, single stalk
I-107	J-107	Any Vine grown for foliage.

SECTION 108

WOODY PLANTS

PREMIUMS: 1ST: \$4 | 2ND: \$3 | 3RD: \$2 | 4TH: \$1

I-110	J-110	Azalea Encore or Other Autumn Blooming Variety (<i>Specimen bloom</i>)
I-111	J-111	Camellia - any variety, single spray or stalk
I-112	J-112	Cleyera japonica, single stalk
I-113	J-113	Daphne spp., single stalk
I-114	J-114	Fatshedera or Fatsia - any type, single leaf with stem
I-115	J-115	Other evergreen woody plant, in flower, single stalk
I-116	J-116	Other evergreen woody plant, berried, single stalk
I-117	J-117	Buddleia, any variety, specimen bloom
I-118	J-118	Callicarpa spp., berried with leaves
I-119	J-119	Callicarpa spp., berried without leaves
I-120	J-120	Hydrangea spp., flowering



ROSES

I-Friday Show J-Wednesday Show

SECTION 109

ROSES

PREMIUMS: 1ST: \$4 | 2ND: \$3 | 3RD: \$2 | 4TH: \$1

I-125	J-125	Large Rose - Single Bloom (<i>Exhibition stage</i>)
I-126	J-126	Large Rose - Fully Open
I-127	J-127	Small Rose - Single Bloom (<i>Exhibition stage</i>)
I-128	J-128	Small Rose - Fully Open

PREMIUMS: 1ST: \$20 | 2ND: \$15 | 3RD: \$10 | 4TH: \$5

Collection of Roses (One entry per exhibitor)

I-130	J-130	Five Large Roses, each a different variety, evenly matched, at exhibition stage. Exhibited in individual vases.
I-131	J-131	Five Small Roses, each a different variety, evenly matched, at exhibition stage. Exhibited in individual vases.

DAHLIAS

I-Friday Show J-Wednesday Show

SECTION 110

DAHLIAS

PREMIUMS: 1ST: \$4 | 2ND: \$3 | 3RD: \$2 | 4TH: \$1

I: FRIDAY Show:
“O Beautiful for Spacious Skies”

J: WEDNESDAY Show:
“Let Freedom Ring”

- One entry per exhibitor per class.
- Blooms without at least one set of foliage on the stem will not be judged.
- Blooms not disbudded will be penalized.
- Only named dahlias are eligible for BEST OF SHOW awards.

The America Dahlia Society recognizes 15 dahlia color categories, encompassing solid colors, blends, variegated patterns and bicolor, excluding blue and the more brilliant tones or green.

Solid Colors: White, yellow, orange, pink, dark pink, red, dark red, lavender, and purple.

Light Blend: A blending of lighter tints and tones of pink, yellow, lavender and other pastels.

Dark Blend: Blends dominated by dark reds, pinks, purples, oranges, lavender, and bronze.

Flame: Blends of red or orange hue that merge with yellow.

Variegated: Two or more colors appearing on the face of the bloom in dots, splashes, or stripes.

Bicolor: Blooms with two distinctly clear and sharply separated colors.

Giant (AA) and Large (A) (1 bloom) **Over 8" in Diameter**

Decorative or Cactus type

I-135	J-135	White, Light Blend
I-136	J-136	Yellow
I-137	J-137	Orange, Bronze
I-138	J-138	Pink, Dark Pink
I-139	J-139	Red, Dark Red
I-140	J-140	Purple, Lavender
I-141	J-141	Flame, Dark Blend
I-142	J-142	Variegated, Bicolor

Medium (B) (1 bloom)

Over 6-8" in Diameter

Decorative or Cactus type

I-143	J-143	White, Light Blend
I-144	J-144	Yellow
I-145	J-145	Orange, Bronze
I-146	J-146	Pink, Dark Pink
I-147	J-147	Red, Dark Red
I-148	J-148	Purple, Lavender
I-149	J-149	Flame, Dark Blend
I-150	J-150	Variegated, Bicolor

DAHLIAS

I-Friday Show J-Wednesday Show

SECTION 110

DAHLIAS

Small (BB) (1 bloom)
4-6" in Diameter

Decorative or Cactus type

I-151	J-151	White, Light Blend
I-152	J-152	Yellow
I-153	J-153	Orange, Bronze
I-154	J-154	Pink, Dark Pink
I-155	J-155	Red, Dark Red
I-156	J-156	Purple, Lavender
I-157	J-157	Flame, Dark Blend
I-158	J-158	Variegated, Bicolor

Miniature (M), Miniature Micro (MC) (1 bloom)
2-4" in Diameter

Decorative or Cactus type

I-159	J-159	White, Light Blend
I-160	J-160	Yellow
I-161	J-161	Orange, Bronze
I-162	J-162	Pink, Dark Pink
I-163	J-163	Red, Dark Red
I-164	J-164	Purple, Lavender
I-165	J-165	Flame, Dark Blend
I-166	J-166	Variegated, Bicolor

**Anemones, Collerettes Orchids, and
Orchettes (1 bloom)**

I-167	J-167	White, Light Blend
I-168	J-168	Yellow
I-169	J-169	Orange, Bronze
I-170	J-170	Pink, Dark Pink
I-171	J-171	Red, Dark Red
I-172	J-172	Purple, Lavender
I-173	J-173	Flame, Dark Blend
I-174	J-174	Variegated, Bicolor

**Ball, Peony, Stellas, Waterlily, Novelty (Single
or fully Double)**

I-175	J-175	White, Light Blend
I-176	J-176	Yellow
I-177	J-177	Orange, Bronze
I-178	J-178	Pink, Dark Pink
I-179	J-179	Red, Dark Red
I-180	J-180	Purple, Lavender
I-181	J-181	Flame, Dark Blend
I-182	J-182	Variegated, Bicolor

**Pompon, Miniball, Mignon Single,
Microstellar, Microwaterlily,
Micronovelty (Fully Double), Micropeony**

I-183	J-183	White, Light Blend
I-184	J-184	Yellow
I-185	J-185	Orange, Bronze
I-186	J-186	Pink, Dark Pink
I-187	J-187	Red, Dark Red
I-188	J-188	Purple, Lavender
I-189	J-189	Flame, Dark Blend
I-190	J-190	Variegated, Bicolor

Dahlia Collection (One entry per exhibitor)

I-191	J-191	Five Medium (B) Dahlias 6-8" in diameter of same type (Decorative or Cactus type), each different variety. Exhibited in individual vases.
I-192	J-192	Five Ball, Peony, Stellar, Waterlily, Novelty (Single or Fully Double) dahlias, same or different types, but the same color family. Exhibited in individual vases.

YOUTH HORTICULTURE

I-Friday Show J-Wednesday Show

SECTION 111

YOUTH HORTICULTURE

PREMIUMS: 1ST: \$4 | 2ND: \$3 | 3RD: \$2 | 4TH: \$1

Elementary

I-195	J-195	Any Red Flower
I-196	J-196	Any White Flower
I-197	J-197	Any Blue/Purple Flower
I-198	J-198	Any Other Color Flower

Middle School

I-199	J-199	Any Red Annual Flower
I-200	J-200	Any White Perennial Flower
I-201	J-201	Any Blue/Purple Annual Flower
I-202	J-202	Any Other Color Perennial Flower

High School

I-203	J-203	Any Red Rose
I-204	J-204	Any White Dahlia
I-205	J-205	Any Blue/Purple Perennial Flower
I-206	J-206	Any Other Color Annual Flower



DESIGNS INFORMATION

FLOWER ARRANGEMENT & DESIGN PREMIUMS

Flower Arrangements & Design Premiums:

1ST: \$25 | 2ND: \$20 | 3RD: \$15 | 4TH: \$10

FLOWER ARRANGEMENT & DESIGN RULES

- The Scale of Points for Design are listed below.
- Design entries will be accepted as follows
 - **Show 1: Thursday, October 1, from 3 to 6 p.m.**
 - **Show 2: Tuesday, October 6, from 3 to 6 p.m.**
- All plant material used in the design **MUST** be identified on the back of the entry tag.
- The exhibitor has the freedom to choose Traditional or Creative Style with any design listed unless restricted by the Flower Show Schedule.
- Any questions regarding designs should be directed to aquacruz1@gmail.com.
- **Exhibitors MUST remove all entries from Show 1 on Tuesday, October 6, between 9 and 11 a.m. Entries from Show 2 on Monday, October 12, between 9 and 11 a.m. Any remaining entries will be disposed of without notification.**
- Some plant materials must be used in every exhibit. This includes fresh and/or dried plant material. Plant material need not be grown by the exhibitor.
- An exhibitor may enter multiple classes within the Design Division, but only one (1) exhibit per class.
- The exhibit must be the work of only one (1) exhibitor.
- All designs will be viewed and judged from the front of the design, unless otherwise stated.
- Plant material not permitted in show: prepared food, cut fruit and/or vegetables.
- Painting, flocking, glittering or dyeing of fresh plant material in any manner is not permitted unless otherwise stated. All other embellishments of fresh plant material are permitted. This includes twisting, braiding, and other manipulation.
- Amateur classes are open to anyone who has **NOT** been a professional florist.

SCALE OF POINTS FOR DESIGN

Theme	60
Creative Selection of Components	20
Excellence (marked superiority in all respects)	10
Organization of all Components	5
Expression (interpretation of class by exhibitor)	5

Total: 100

AWARDS

FRIDAY AND WEDNESDAY AWARDS

Trish Sumners Award: \$100

- All designs are eligible.
- Awarded in both shows.
- Chosen for best use of creativity.
- Purple & White Rosette

Fresh Flower Design: \$25

- Classes I 210-213 & J 230-233.
- Awarded in both shows.
- Red, White, and Blue Rosette

Botanical Design: \$25

- Classes I 214-217 J 234-237.
- Awarded in both shows.
- Red, White, and Blue Rosette

Small Floral Design: \$25

- Classes I 218-221 J 238-241.
- Awarded in both shows.
- Red, White, and Blue Rosette

Miniature Floral Design: \$25

- Classes I 222-225 J 242-245.
- Awarded in both shows.
- Red, White, and Blue Rosette

Floral Group Design: \$25

- Classes I 226 J 246.
- Awarded in both shows.
- Red, White, and Blue Rosette

Youth Fresh Floral Design: \$25

- Classes I 250-261.
- Awarded in Friday's show ONLY.
- Red, White, and Blue Rosette



FRIDAY DESIGN SHOW: AMERICAN DREAM

SECTION 112

12" FRESH FLORAL DESIGN

PREMIUMS: 1ST: \$25 | 2ND: \$20 | 3RD: \$15 | 4TH: \$10

(Must not exceed 12" base)

- I-210 "Boston Tea Party" - A floral arrangement in a standard teacup.
- I-211 "Rose Garden" - Roses featured in a grouped mass design.
- I-212 "Land of the Free" - Creative design with an emphasis on movement and rhythm.
- I-213 "Happy 250th Birthday!" - A floral centerpiece celebrating the USA's 250th birthday. Symmetrical mass will be staged on a turntable.

SECTION 113

BOTANICAL DESIGN (DRIED PLANT MATERIAL)

PREMIUMS: 1ST: \$25 | 2ND: \$20 | 3RD: \$15 | 4TH: \$10

(Must not exceed 10" base; Materials can be painted)

- I-214 "First Lady" - A dress or outfit decorating a 11.5" doll. The Inaugural Ball is the inspiration.
- I-215 "Statue of Liberty" - Made from botanicals.
- I-216 "Commander or Chief" - An American headdress made from botanicals.
- I-217 "From Sea to Shining Sea" - A lighthouse made from botanicals.

SECTION 114

12" SMALL FLORAL DESIGN

PREMIUMS: 1ST: \$25 | 2ND: \$20 | 3RD: \$15 | 4TH: \$10

(Above 4" but must not exceed 12")

- I-218 "Challenger" - Inspired by the bald eagle.
- I-219 "Pilgrim's Pride" - Design in a gourd container.
- I-220 "Purple Mountains Majesty" - Emphasis on purple in a mass design.
- I-221 "Freedom" - Any design under 12" with freedom of expression. Plant material may be painted.

SECTION 115

4" MINIATURE FLORAL DESIGN

PREMIUMS: 1ST: \$25 | 2ND: \$20 | 3RD: \$15 | 4TH: \$10

(Must not exceed 4" in any direction)

- I-222 "Life" - Open to personal interpretation.
- I-223 "Liberty Bell" - A miniature reflective floral design inspired by the Liberty Bell.
- I-224 "The Pursuit of Happiness" - A design in a fun container.
- I-225 "Independence" - Duo design composed of more than one base or container.

SECTION 116

FLORAL GROUP DISPLAY

PREMIUMS: 1ST: \$100 | 2ND: \$50 | 3RD: \$25 | 4TH: \$15

(Floor design on life-sized mannequin)

- I-226 "Lady Liberty" - Patriotic apparel. Open to any organization. Registration is limited and must be approved by email at aquacruz1@gmail.com

WEDNESDAY DESIGN SHOW: AMERICAN SPIRIT

SECTION 117

12" FRESH FLORAL DESIGN

PREMIUMS: 1ST: \$25 | 2ND: \$20 | 3RD: \$15 | 4TH: \$10

(Must not exceed 12" base)

J-230 *"Red"* (Courage) - Focus on the color red with flowers or components

J-231 *"White"* (Purity) - Focus on white flowers or components

J-232 *"Blue"* (Justice) - Focus on blue or purple flowers or components

J-233 *"Star Spangled Banner"* - Focus on tricolor; red, white, and blue

SECTION 118

BOTANICAL DESIGN (DRIED PLANT MATERIAL)

PREMIUMS: 1ST: \$25 | 2ND: \$20 | 3RD: \$15 | 4TH: \$10

(Must not exceed 10" base; Materials can be painted)

J-234 *"We will be known forever for the tracks we leave"* - Decorated moccasin

J-235 *"Everything the power does, it does in a circle"* - Necklace emphasizing turquoise

J-236 *"Listen to the wind"* - Decorated bracelets or earrings (paired)

J-237 *"Land of the noble brave"* - Any ceremonial piece not mentioned above

SECTION 119

12" SMALL FLORAL DESIGN

PREMIUMS: 1ST: \$25 | 2ND: \$20 | 3RD: \$15 | 4TH: \$10

(Above 4" but must not exceed 12")

J-238 *"Redwood Forest"* - A line design using wood

J-239 *"Gulf Stream Waters"* - A design incorporating water

J-240 *"New York Island"* - A design using grid components

J-241 *"California"* - A creative design using gold components

SECTION 120

4" MINIATURE FLORAL DESIGN

PREMIUMS: 1ST: \$25 | 2ND: \$20 | 3RD: \$15 | 4TH: \$10

(Must not exceed 4" in any direction)

J-242 *"National Flower"* - A rose floral design

J-243 *"National Tree"* - Oak component or inspired

J-244 *"National Mammal"* - Bison inspired floral design

J-245 *"National Colors"* - Stars and stripes inspired floral design

SECTION 121

FLORAL GROUP DISPLAY

PREMIUMS: 1ST: \$100 | 2ND: \$50 | 3RD: \$25 | 4TH: \$15

(Floor design on life-sized mannequin)

J-246 *"Home of the Brave"* - A salute to the men and women who protect our country. Any branch of service, past or present. Open to any organization. A floor design based on the floor and should be tall enough to be viewed at eye level.

FRIDAY YOUTH DESIGN SHOW

PREMIUMS: 1ST: \$20 | 2ND: \$15 | 3RD: \$10 | 4TH: \$5

Elementary School: Grades 1-5 | Middle School: Grades 6-8 | High School: Grades 9-12

SECTION 122

FRESH FLORAL DESIGN: GRADES 1-5

- I-250** "Liberty Bell" - A miniature floral design inspired by the Liberty Bell. Not to exceed 4."
- I-251** "White house Rose Garden" - A dish garden (miniature garden with multiple plants in a single container). Not to exceed 12" in depth.
- I-252** "Rockets' Red Glare" - Fresh floral design inspired by fireworks. Not to exceed 12" base.
- I-253** "Land of Liberty" - Terrarium. Not to exceed 12" base.

SECTION 123

FRESH FLORAL DESIGN: GRADES 6-8

- I-254** "Liberty Bell" - A miniature floral design inspired by the Liberty Bell. Not to exceed 4."
- I-255** "White House Rose Garden" - A dish garden (miniature garden with multiple plants in a single container). Not to exceed 12" in depth.
- I-256** "Rockets' Red Glare" - Fresh floral design inspired by fireworks. Not to exceed 12" base.
- I-257** "Land of Liberty" - Terrarium. Not to exceed 12" base.

SECTION 124

FRESH FLORAL DESIGN: GRADES 9-12

- I-258** "Liberty Bell" - A miniature floral design inspired by the Liberty Bell. Not to exceed 4."
- I-259** "White House Rose Garden" - A dish garden (miniature garden with multiple plants in a single container). Not to exceed 12" in depth.
- I-260** "Rockets' Red Glare" - Fresh floral design inspired by fireworks. Not to exceed 12" base.
- I-261** "Land of Liberty" - Terrarium. Not to exceed 12" base.