

*Department R*

# HAND CRAFTS ADULTS & SENIORS

## 2026 COMPETITION GUIDE

---

**ENTRY DEADLINE: SEPTEMBER 1**

### DEPARTMENT SUPERINTENDENT

Lisa Mcgee

### DROP OFF DAYS

Friday, September 25: 4 to 8 p.m.

Saturday, September 26: 10 a.m. to 2 p.m.

Sunday, September 27: 12 to 4 p.m.

### PICK UP DAYS

Monday, October 12: 10 a.m. to 6 p.m.

Tuesday, October 13: 10 a.m. to 4 p.m.

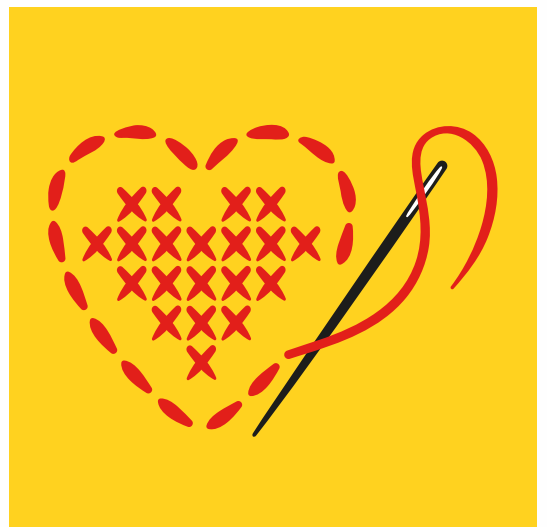
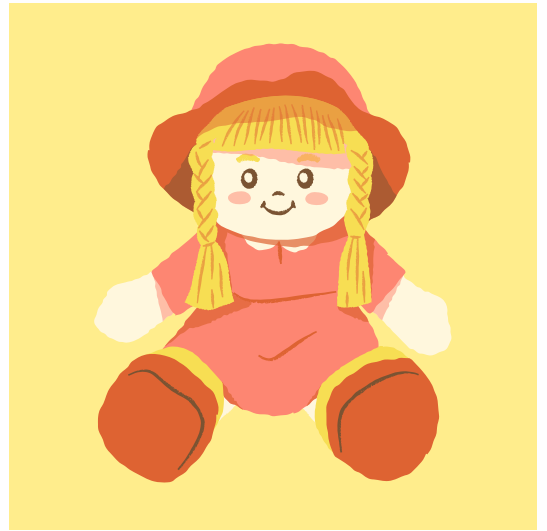
### COMPETITIVE EXHIBITS OFFICE

Hours: Mon. - Fri., 8:30 a.m. - 4:30 p.m.

[brannock@carolinaclassicfair.com](mailto:brannock@carolinaclassicfair.com)

336-727-2236

---



**[CLICK HERE TO ENTER  
A COMPETITION!](#)**

# DROP-OFF AND PICK-UP

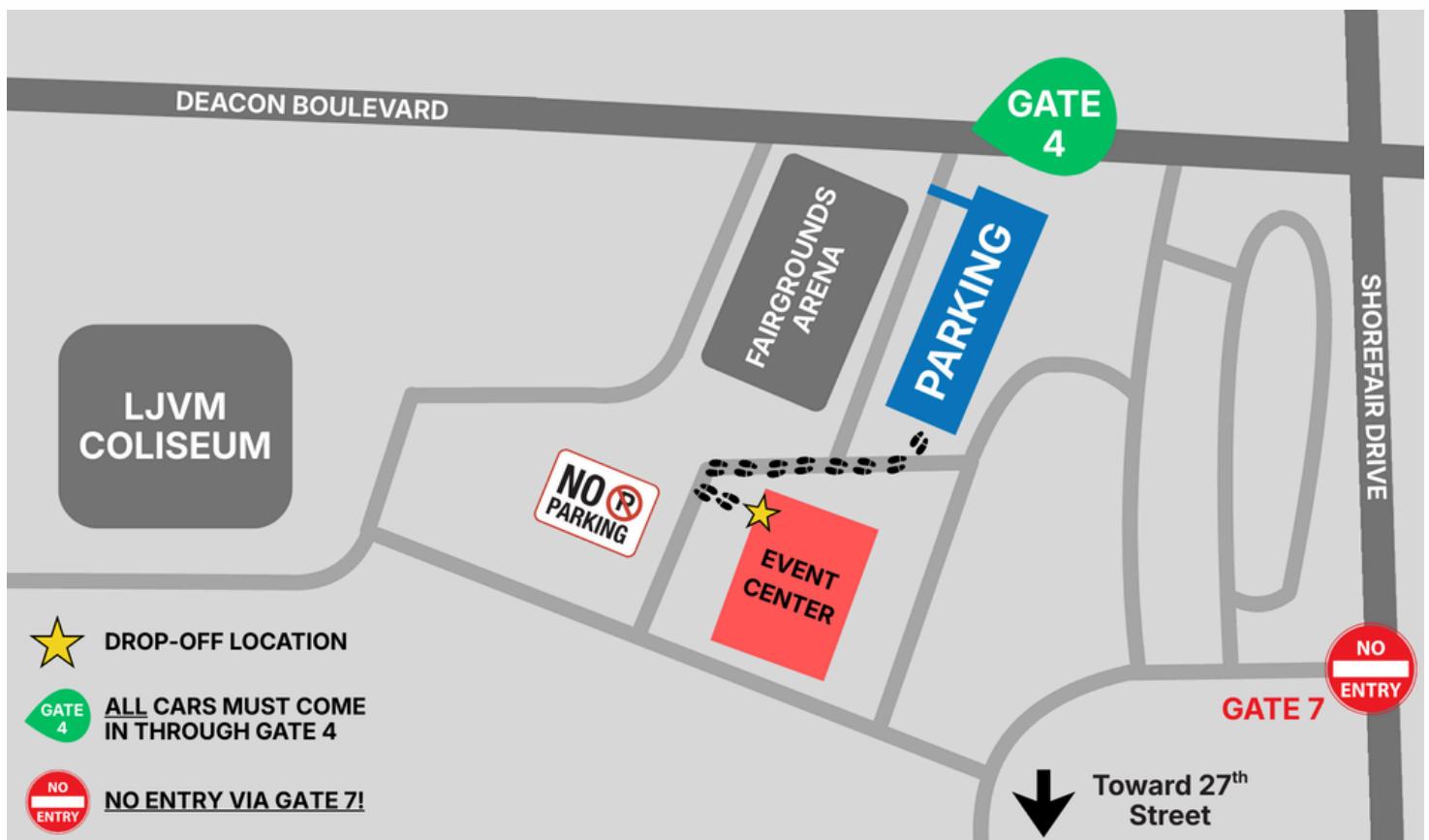
## DROP-OFF INFORMATION

- Drop-off for **HAND CRAFTS** exhibits is:
  - **Friday, September 25 from 4 to 8 p.m.**
  - **Saturday, September 26 from 10 a.m. to 2 p.m.**
  - **Sunday, September 27 from 12 to 4 p.m.**
- If you have entries for other departments, you may have a separate drop-off date. Please read each departments rules and guidelines when entering.
- Do **NOT** remove the claim check portion; you will need this to pick up your exhibit(s).

## PICK-UP INFORMATION

- Pick-up for ALL exhibits is **(NO EXCEPTIONS)**:
  - **Monday, October 12 from 10 a.m. to 6 p.m.**
  - **Tuesday, October 13 from 10 a.m. to 4 p.m.**
- You **MUST** have your claim check tag to reclaim your entry, NO EXCEPTIONS.
- Exhibits cannot be removed prior to October 12.
- **All items will be discarded after October 13.**

**ADDRESS: 414 DEACON BOULEVARD, GATE 4**



# FAQs & ENTRY INFORMATION

## FREQUENTLY ASKED QUESTIONS

**When will I receive my entry tag(s)?** Entry tags will be mailed after September 1.

**Where do I go to drop off my exhibit(s)?** Please come in Gate 4 and follow the signs. Please see map on page 2.

**Where will my exhibit(s) be displayed at the fair?** Hand Crafts exhibits are displayed in the Event Center.

**Where should I place my tag(s)?** Please attach tag to the **UPPER RIGHT CORNER** of the exhibit, where practical and possible. This will ensure your item is displayed correctly when hung.

**Are there size limitations?** Pictures can be no bigger than 20" x 24," including frame. Door decorations must not exceed 24" in any direction. **All framed exhibits must have exhibitor's name and hanger on back.**

**Will I need to furnish containers for my exhibit(s)?** No, the Fair will furnish the containers unless otherwise specified.

**Can I enter something I have entered in the past?** No, all exhibits must have been completed since the end of the previous year's fair.

**How do I pick up my exhibit(s) after the fair?** All entries **MUST** be picked up on **Monday, October 12 from 10 a.m. to 6 p.m. or Tuesday, October 13 from 10 a.m. to 4 p.m.** No items will be removed before October 12. All items will be discarded after October 13. **NO EXCEPTIONS!**

## NEW CLASSES

### SECTION 106: HOLIDAY & SPECIAL OCCASION DECORATION

Door Decoration - Entirely Original

Table Decoration - Entirely Original

# PREMIUMS AND AWARDS

- A ribbon is a badge of merit, and in no case should be attached to an article or animal where meritorious qualities are lacking.
- The following colors will be used to designate awards:
  - **Judge's Choice:** Red, White and Blue
  - **First Place:** Blue
  - **Second Place:** Red
  - **Third Place:** White
- If awarded, all ribbons must be picked up following the Fair (October 12-13).
- Premiums will be paid only from the judging results records and **NOT** from the ribbon or tags on exhibits.
- Errors or omissions in premium payments not reported to the Fair Administrative Office by December 31, 2026, will **NOT** be paid.



# CATEGORIES

## SECTION 100

## CROCHET AND KNITTING

**PREMIUMS: 1ST: \$20 | 2ND: \$15 | 3RD: \$10**

- 001. Sr. Adult Afghan - Baby (No larger than 36" x 36") *(55 and older)*
- 002. Sr. Adult Afghan - Crocheted (No larger than 50" x 70") *(55 and older)*
- 003. Sr. Adult Afghan - All Other Types (No larger than 50" x 70") *(55 and older)*
- 004. Baby - Crocheted (No larger than 36" x 48")
- 005. Crocheted - Lap Quilt (40" x 50")
- 006. Knitted - Lap Quilt (40" x 50")
- 007. Crocheted - Acrylic (No larger than 50" x 70")
- 008. Crocheted - Wool (No larger than 50" x 70")
- 009. Knitted - Acrylic (No larger than 50" x 70")
- 010. Knitted - Wool (No larger than 50" x 70")
- 011. Baby Car Seat Afghan - Crochet (No larger than 19" x 21")
- 012. Baby Car Seat Afghan - Knitted (No larger than 19" x 21")



**JUDGE'S CHOICE: \$10 & ROSETTE**

*(Selected from 1st place winners of categories above)*

## SECTION 101

## LINENS

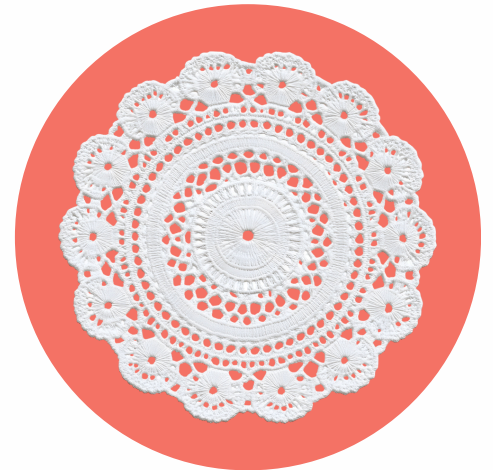
**PREMIUMS: 1ST: \$10 | 2ND: \$8 | 3RD: \$4**

- 015. Decorated Kitchen Towel
- 016. Decorated Pillowcase
- 017. Pillow - All Types (No larger than 20" x 20")
- 018. Sr. Adult Pillow - All Types *(55 and older)*
- 019. Crocheted Placemats (4)



**JUDGE'S CHOICE: \$20 & ROSETTE**

*(Selected from 1st place winners of categories above)*



# CATEGORIES

## SECTION 102

## NEEDLEWORK

**PREMIUMS: 1ST: \$12 | 2ND: \$10 | 3RD: \$8**

- 025. Embroidery
- 026. Cross Stitch - Animals
- 027. Cross Stitch - Buildings
- 028. Cross Stitch - Christmas or Other Holiday
- 029. Cross Stitch - Flowers
- 030. Cross Stitch - Nursery or Children
- 031. Cross Stitch - Religious
- 032. Cross Stitch - Seashells, Seascapes, etc.
- 033. Cross Stitch - Wildlife (*Deer, tiger, etc.*)
- 034. Needlepoint - Commercial Pattern
- 035. Sr. Adult Needlepoint - Commercial Pattern *(55 and older)*
- 036. Needlework on Plastic
- 037. Sr. Adult Small Crocheted Item - Wool (*Hat, scarf, gloves, etc.*) *(55 and older)*
- 038. Sr. Adult Small Crocheted Item - Acrylic (*Hat, scarf, gloves, etc.*) *(55 and older)*
- 039. Sr. Adult Small Knitted Item - Wool (*Hat, scarf, gloves, etc.*) *(55 & older)*
- 040. Sr. Adult Small Kitted Item - Acrylic (*Hat, scarf, gloves, etc.*) *(55 & older)*
- 041. Doily - Crochet
- 042. Rug (Not larger than 3' x 5')
- 043. Doll - Crochet
- 044. Doll - Knit
- 045. Doll - Soft Sculpture
- 046. Doll - Other
- 047. Mini Doll Quilt
- 048. Sr. Adult Doll Clothes (on or off doll) *(55 & older)*
- 049. Crocheted/Knitted Pet Costume
- 050. Stuffed Toy
- 051. Wall Hanging - Machine Made, Ready to Hang (No pictures; No larger than 2' x 3')
- 052. Sr. Adult Wall Hanging (No pictures; No larger than 18" x 24") *(55 & older)*
- 053. Misc. Knitted Toy
- 054. Misc. Crochet Toy
- 055. Misc. Fibers Item (*Felt, hooked, woven; No larger than 24" x 24"*)



**JUDGE'S CHOICE: \$10 & ROSETTE**

*(Selected from 1st place winners of categories above)*

# CATEGORIES

## SECTION 103

## NEEDLEWORK (CONTINUED)

**PREMIUMS: 1ST: \$20 | 2ND: \$18 | 3RD: \$16**

- 056. Cross Stitch - Original Design
- 057. Cross Stitch - Sampler
- 058. Needlepoint - Original Design
- 059. Sr. Adult Needlepoint - Original Design *(55 and older)*



**JUDGE'S CHOICE: \$10 & ROSETTE**

*(Selected from 1st place winners of categories above)*

## SECTION 104

## BARN QUILTS

**PREMIUMS: 1ST: \$25 | 2ND: \$20 | 3RD: \$15**

- 060. No Kits; Maximum Size: 20" high x 20" in length. Judged on originality and attractiveness

## SECTION 105

## HANDMADE CARDS

**PREMIUMS: 1ST: \$12 | 2ND: \$10 | 3RD: \$8**

- 065. All Occasion *(Sympathy, birthday, get well soon, etc.)*
- 066. Christmas
- 067. Easter
- 068. Thanksgiving
- 069. Wedding
- 070. Baby



**JUDGE'S CHOICE: \$10 & ROSETTE**

*(Selected from 1st place winners of categories above)*

# CATEGORIES

## SECTION 106

## HOLIDAY & SPECIAL OCCASION DECORATION

**PREMIUMS: 1ST: \$12 | 2ND: \$10 | 3RD: \$8**

**Door decorations must not exceed 24" in any direction. Door decorations must also have hanger attached on back.**

### CHRISTMAS

- 075. Door Decoration - Entirely Original
- 076. Stocking - Entirely Original
- 077. Table Decoration - Entirely Original
- 078. Tree Ornaments - Entirely Original *(Must bring two ornaments)*
- 079. Sr. Adult Tree Ornament *(Bring one ornament)* **(55 and older)**
- 080. Tree Skirt - Entirely Original
- 081. Sr. Adult Santa Claus - Any Media **(55 and older)**

### EASTER

- 082. Door Decoration - Entirely Original
- 083. Easter Basket
- 084. Sr. Adult Easter Bunny - Any Media *(Must not exceed 18" in height)* **(55 and older)**

### HALLOWEEN

- 085. Door Decoration - Entirely Original

### PATRIOTIC

- 086. Door Decoration - Entirely Original

### THANKSGIVING

- 087. Door Decoration - Entirely Original
- 088. Table Decoration - Entirely Original

### VALENTINE'S DAY

- 089. Door Decoration - Entirely Original

### ANY OTHER HOLIDAY

- 090. Door Decoration - Entirely Original **NEW**
- 091. Table Decoration - Entirely Original **NEW**



**JUDGE'S CHOICE: \$10 & ROSETTE**

*(Selected from 1st place winners of categories above)*

# CATEGORIES

## SECTION 107

## ARTS

**Pictures and Group Projects must be original and ready for display.**

**PREMIUMS: 1ST: \$25 | 2ND: \$20 | 3RD: \$15**

- 095. Sr. Adult Art - Ink - Any Subject *(55 and older)*
- 096. Sr. Adult Art - Mixed Medium - *(Any two mediums combined)* *(55 and older)*
- 097. Sr. Adult Art - Any Medium - Fair Theme - **"Patriotic"** *(55 and older)*
- 098. Sr. Adult Art - Charcoal/Pencil - Any Subject *(55 and older)*
- 099. Sr. Adult Art - Oil/Acrylic/Pastel - Portrait *(55 and older)*
- 100. Sr. Adult Art - Oil/Acrylic/Pastel - Nostalgia *(55 and older)*
- 101. Sr. Adult Art - Oil/Acrylic/Pastel - Animal/Bird *(55 and older)*
- 102. Sr. Adult Art - Watercolor - Landscape/Seascape *(55 and older)*
- 103. Sr. Adult Art - Watercolor - Still Life *(55 and older)*
- 104. Wood Carving *(Must not exceed 2' x 2')*
- 105. Woodworking - Small Item *(Must not exceed 3' x 3')*
- 106. Diamond Art - Kit
- 107. Diamond Art - Original
- 108. Sr. Adult - Jewelry - Handmade *(1 piece)* *(55 and older)*

**PREMIUMS: 1ST: \$20 | 2ND: \$15 | 3RD: \$10**

- 109. Paint-Poured Canvas
- 110. Basketry - Reed/Cane *(Must not exceed 10" in width)*
- 111. Group Project - Any Media *(Must not exceed 3' x 1'; Must be original and ready for display)*
- 112. Decorated Shoe *(Entry of one shoe (sneaker, casual, heel, or boot) that has been decorated using handmade or store-bought embellishments)*



**JUDGE'S CHOICE: \$10 & ROSETTE**

*(Selected from 1st place winners of categories above)*



# CATEGORIES

## SECTION 108

## FLOWERS AND WREATHS

**PREMIUMS: 1ST: \$25 | 2ND: \$20 | 3RD: \$15**

### PERMANENT FLOWER ARRANGEMENTS

- 115. Arrangement - Corn Shuck
- 116. Arrangement - Dried
- 117. Arrangement - Handmade Flowers
- 118. Arrangement - Silk Flowers
- 119. Creative Twist Flowers
- 120. Dried Materials (*Cultivated or roadside*)
- 121. Sr. Adult Gourd - Decorated (*55 and older*)

### WREATHS (MUST HAVE HANGER ON BACK)

- 122. Wreath - Made from Creative Twist
- 123. Wreath - Corn Shuck
- 124. Wreath - Grapevine - Decorated



### JUDGE'S CHOICE: \$10 & ROSETTE

*(Selected from 1st place winners of categories above)*

