

Department V

YOUTH FINE ARTS

2026 COMPETITION GUIDE

ENTRY DEADLINE: SEPTEMBER 1

DEPARTMENT SUPERINTENDENT

Jennifer Frick

DROP OFF DAYS

Friday, September 25: 4 to 8 p.m.

Saturday, September 26: 10 a.m. to 2 p.m.

Sunday, September 27: 12 to 4 p.m.

PICK UP DAYS

Monday, October 12: 10 a.m. to 6 p.m.

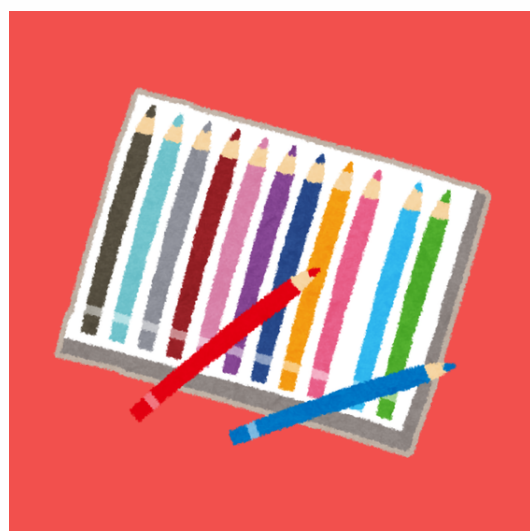
Tuesday, October 13: 10 a.m. to 4 p.m.

COMPETITIVE EXHIBITS OFFICE

Hours: Mon. - Fri., 8:30 a.m. - 4:30 p.m.

brannock@carolinaclassicfair.com

336-727-2236



CLICK HERE TO ENTER
A COMPETITION!

DROP-OFF AND PICK-UP

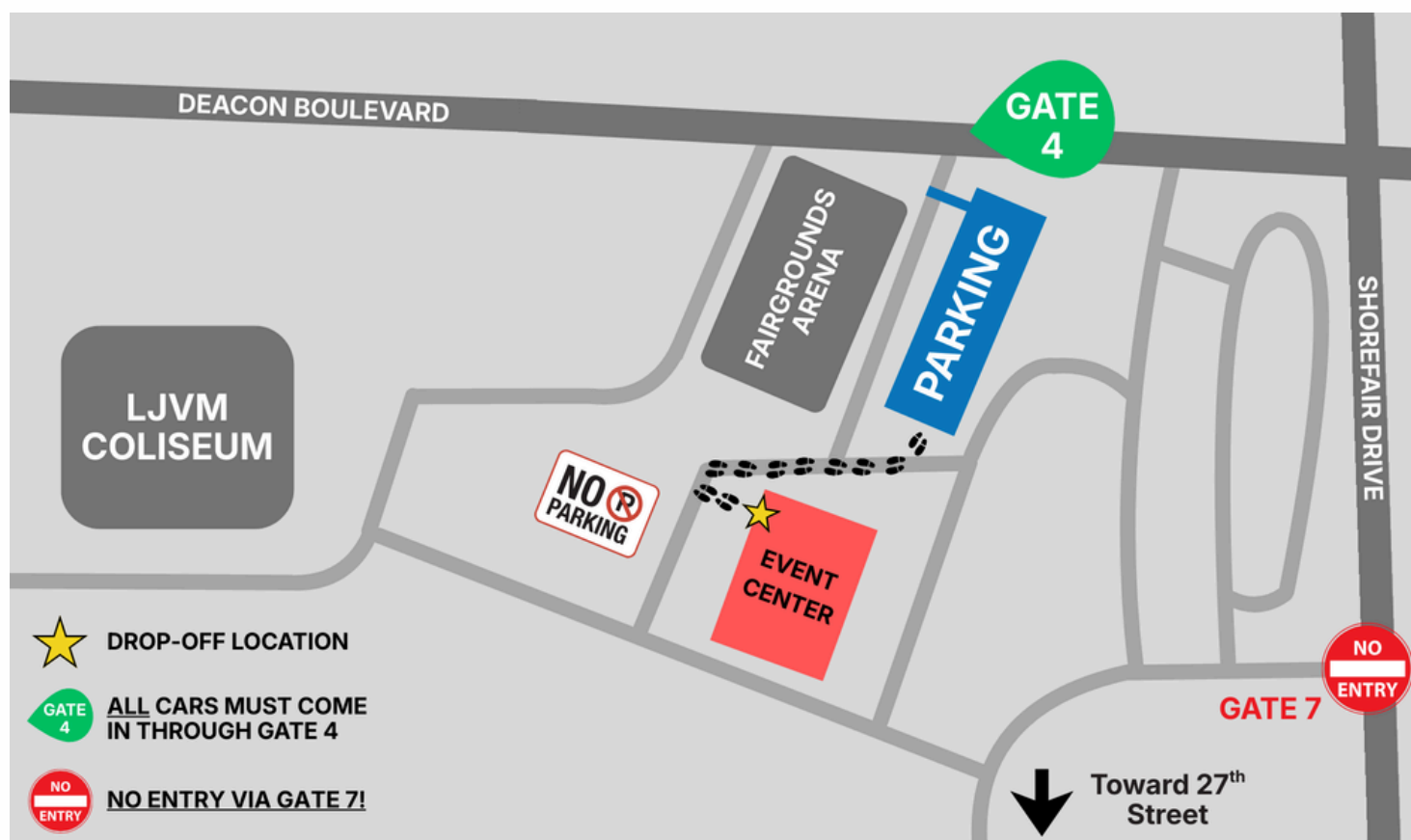
DROP-OFF INFORMATION

- Drop-off for **JUNIOR FINE ARTS** exhibits is:
 - **Friday, September 25 from 4 to 8 p.m.**
 - **Saturday, September 26 from 10 a.m. to 2 p.m.**
 - **Sunday, September 27 from 12 to 4 p.m.**
- If you have entries for other departments, you may have a separate drop-off date. Please read each department's rules and guidelines when entering.
- Do **NOT** remove the claim check portion; you will need this to pick up your exhibit(s).

PICK-UP INFORMATION

- Pick-up for ALL exhibits is **(NO EXCEPTIONS)**:
 - **Monday, October 12 from 10 a.m. to 6 p.m.**
 - **Tuesday, October 13 from 10 a.m. to 4 p.m.**
- You **MUST** have your claim check tag to reclaim your entry, NO EXCEPTIONS.
- Exhibits cannot be removed prior to October 12.
- **All items will be discarded after October 13.**

ADDRESS: 414 DEACON BOULEVARD, GATE 4



FAQs & ENTRY INFORMATION

FREQUENTLY ASKED QUESTIONS

When will I receive my entry tag(s)? Entry tags will be mailed after September 1.

Where do I go to drop off my exhibit(s)? Please come in Gate 4 and follow the signs. See the map on page 2.

Where will my exhibit(s) be displayed at the fair? Junior Fine Art exhibits are displayed in the Event Center.

Can I enter something I have entered in the past? No, all items entered must be completed since the end of the previous year's fair.

Where should I place my tag(s)? Please attach tag to the **UPPER RIGHT CORNER** of the exhibit. This will ensure your item is displayed correctly when hung.

Can I use commercial mixes? Commercial mixes **cannot** be used in the baking and cooking competitions.

What happens if my item(s) start to deteriorate during the Fair? The Fair reserves the right to remove and discard items that are deteriorating.

How do I pick up my exhibit(s) after the fair? All entries **MUST** be picked up on **Monday October 12 from 10 a.m. to 6 p.m. or Tuesday, October 13 from 10 a.m. to 4 p.m.** No items will be removed before October 12. All items will be discarded after October 13. **NO EXCEPTIONS!**

NEW CLASSES

SECTION 101: PRESCHOOL THRU KINDERGARTEN

Diamond Art Kit

SECTION 102: GRADES 1-2

Diamond Art Kit

PREMIUMS AND AWARDS

- A ribbon is a badge of merit, and in no case should be attached to an article or animal where meritorious qualities are lacking.
- The following colors will be used to designate awards:
 - **Judge's Choice:** Red, White and Blue
 - **First Place:** Blue
 - **Second Place:** Red
 - **Third Place:** White
 - **Fourth Place:** Pink
- If awarded, all ribbons must be picked up following the Fair (October 12-13).
- Premiums will be paid only from the judging results records and **NOT** from the ribbon or tags on exhibits.
- Errors or omissions in premium payments not reported to the Fair Administrative Office by December 31, 2026, will **NOT** be paid.



CATEGORIES

- **NO MATTING OR FRAMING. NO 3-D ITEMS.**
- Exhibits must **NOT** exceed 18" in any direction.
- All pastels, colored chalk, and charcoal art **MUST** be sprayed with fixative.
- All crafts must be original.

SECTION 100

PRE-SCHOOL THRU KINDERGARTEN

PREMIUMS: 1ST: \$7 | 2ND: \$6 | 3RD: \$5 | 4TH: RIBBON

- | | |
|---|--|
| 001. Crayon | 007. Pastel |
| 002. Pencil, Colored Pencil, or Pen & Ink | 008. Colored Chalk |
| 003. Watercolor | 009. Charcoal |
| 004. Acrylic | 010. Cut or Torn Paper |
| 005. Tempera | 011. Favorite " Patriotic " Scene (Any media) |
| 006. Marker/Felt-tip Pen | 012. Diamond Art - Kit NEW |



JUDGE'S CHOICE: \$10 & ROSETTE

(Selected from 1st place winners of categories above)

SECTION 101

GRADES 1-2

PREMIUMS: 1ST: \$8 | 2ND: \$7 | 3RD: \$6 | 4TH: RIBBON

- | | |
|---|--|
| 013. Crayon | 020. Pastel |
| 014. Pencil, Colored Pencil, or Pen & Ink | 021. Colored Chalk |
| 015. Watercolor | 022. Charcoal |
| 016. Tempera | 023. Cut or Torn Paper |
| 017. Marker/Felt-tip Pen | 024. Favorite " Patriotic " Scene (Any media) |
| 018. Oil | 025. Diamond Art - Kit NEW |
| 019. Acrylic | |



JUDGE'S CHOICE: \$10 & ROSETTE

(Selected from 1st place winners of categories above)

CATEGORIES

- **NO MATTING OR FRAMING. NO 3-D ITEMS.**
- Exhibits must **NOT** to exceed 18" in any direction.
- All pastels, colored chalk, and charcoal art **MUST** be sprayed with fixative.
- All crafts must be original.

SECTION 102

GRADES 3-5

PREMIUMS: 1ST: \$8 | 2ND: \$7 | 3RD: \$6 | 4TH: RIBBON

- 026.** Crayon
- 027** Pencil, Colored Pencil, or Pen & Ink
- 028.** Watercolor
- 029.** Tempera
- 030.** Marker/Felt-tip Pen
- 031.** Oil
- 032.** Acrylic
- 033.** Pastel
- 034.** Colored Chalk
- 035.** Charcoal
- 036.** Cut or Torn Paper
- 037.** Favorite "**Patriotic**" Scene *(Any media)*
- 038.** Diamond Art - Kit
- 039.** Diamond Art - No Kit



JUDGE'S CHOICE: \$10 & ROSETTE

(Selected from 1st place winners of categories above)

CATEGORIES

- **NO MATTING OR FRAMING. NO 3-D ITEMS.**
- Exhibits must **NOT** exceed 18" in any direction.
- All pastels, colored chalk, and charcoal art **MUST** be sprayed with fixative.
- All crafts must be original.

SECTION 103

GRADES 6-8

PREMIUMS: 1ST: \$10 | 2ND: \$8 | 3RD: \$6 | 4TH: RIBBON

- 040.** Drawing (*Any media*)
- 041.** Marker/Felt-tip Pen
- 042.** Oil
- 043.** Acrylic
- 044.** Watercolor (*Tempera/Watercolor/India Ink combined*)
- 045.** Anime Animated Drawing
- 046.** Freehand Computer Generated
- 047.** Pastel
- 048.** Colored Chalk
- 049.** Charcoal
- 050.** Pencil, Colored Pencil, or Pen & Ink
- 051.** Diamond Art - Kit
- 052.** Diamond Art - No Kit
- 053.** Fabric or Graphic Arts (*Hand-printed, silk-screened, blocked print, stencil batik, lithograph, etc.*)
- 054.** Commercial Art (*Advertising, fashion illustrations, greeting cards, posters, etc.*)
- 055.** Favorite "**Patriotic**" Scene (*Any media*)



JUDGE'S CHOICE: \$10 & ROSETTE

(Selected from 1st place winners of categories above)

CATEGORIES

- **NO MATTING OR FRAMING. NO 3-D ITEMS.**
- Exhibits must **NOT** to exceed 18" in any direction.
- All pastels, colored chalk, and charcoal art **MUST** be sprayed with fixative.
- All crafts must be original.

SECTION 104

GRADES 9-12

PREMIUMS: 1ST: \$10 | 2ND: \$8 | 3RD: \$6 | 4TH: RIBBON

- 056.** Drawing (*Any media*)
- 057.** Marker/Felt-tip Pen
- 058.** Oil
- 059.** Acrylic
- 060.** Watercolor (*Tempera/Watercolor/India Ink combined*)
- 061.** Anime Animated Drawing
- 062.** Freehand Computer Generated
- 063.** Pastel
- 064.** Colored Chalk
- 065.** Charcoal
- 066.** Pencil, Colored Pencil, or Pen & Ink
- 067.** Diamond Art - Kit
- 068.** Diamond Art - No Kit
- 069.** Fabric or Graphic Arts (*Hand-printed, silk-screened, blocked print, stencil batik, lithograph, etc.*)
- 070.** Commercial Art (*Advertising, fashion illustrations, greeting cards, posters, etc.*)
- 071.** Favorite "**Patriotic**" Scene (*Any media*)



JUDGE'S CHOICE: \$10 & ROSETTE

(Selected from 1st place winners of categories above)